

*Shingwauk Residential Schools Centre
Algoma University*

Wikwemikong Indian Residential School

Manitowaning, ON
Robinson Huron Treaty (1854) Territory



Photo Album

Display Purposes Only – Do Not Remove

Introduction

This photo album has been compiled by the Shingwauk Residential Schools Centre. The Centre developed out of the work undertaken by the Shingwauk Project. The Project began in 1979 as a cross-cultural research and educational development project of Algoma University (AU) and the Children of Shingwauk Alumni Association (CSAA).

The Shingwauk Project and the CSAA have undertaken many activities since 1979 including reunions, healing circles, publications, videos, photo displays, curriculum development and the establishment of an archive, library and heritage collections, as well as a Shingwauk Directory and website. Over many years and in many ways these initiatives have been generously supported by Indigenous and non-Indigenous governments, churches, non-governmental organizations and private individuals.

The desire of the Shingwauk Project to promote *sharing, healing, and learning* continues today through the work of the Shingwauk Residential Schools Centre.

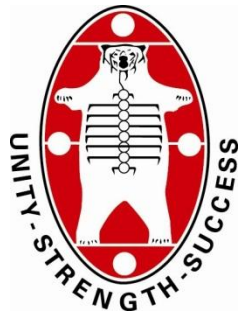
Conditions of Use and Acknowledgements

This publication is for research purposes only. The information and photographs contained herein are constantly being updated and revised. If you have additional information or photographs that you would like to add to the collection, please do not hesitate to contact us.

We would like to thank the Children of Shingwauk Alumni Association, Algoma University, the Aboriginal Healing Foundation and Nishnawbe Aski Nation for their support in producing this photo album series.

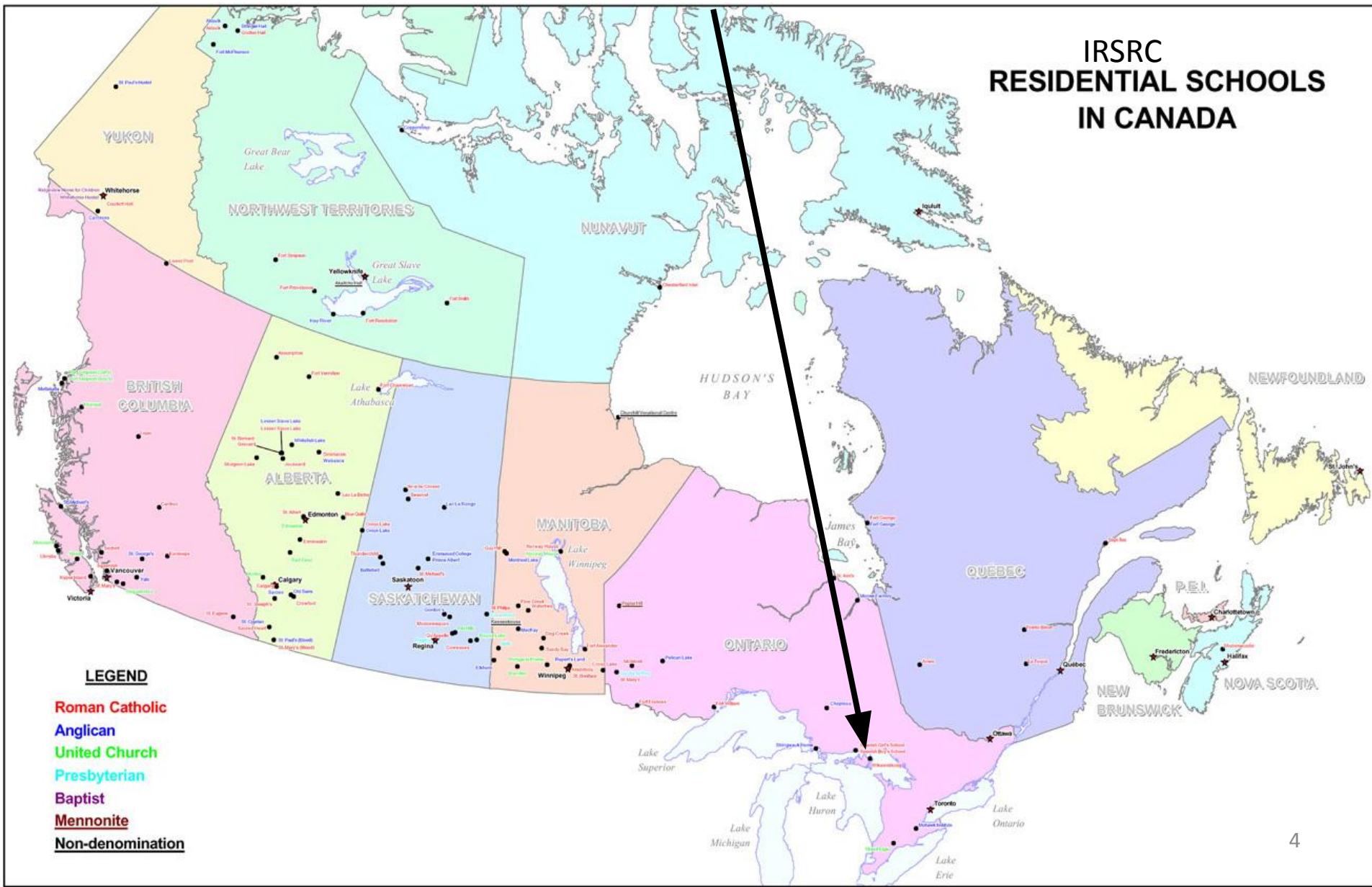


Chief Shingwauk
(1773-1854)



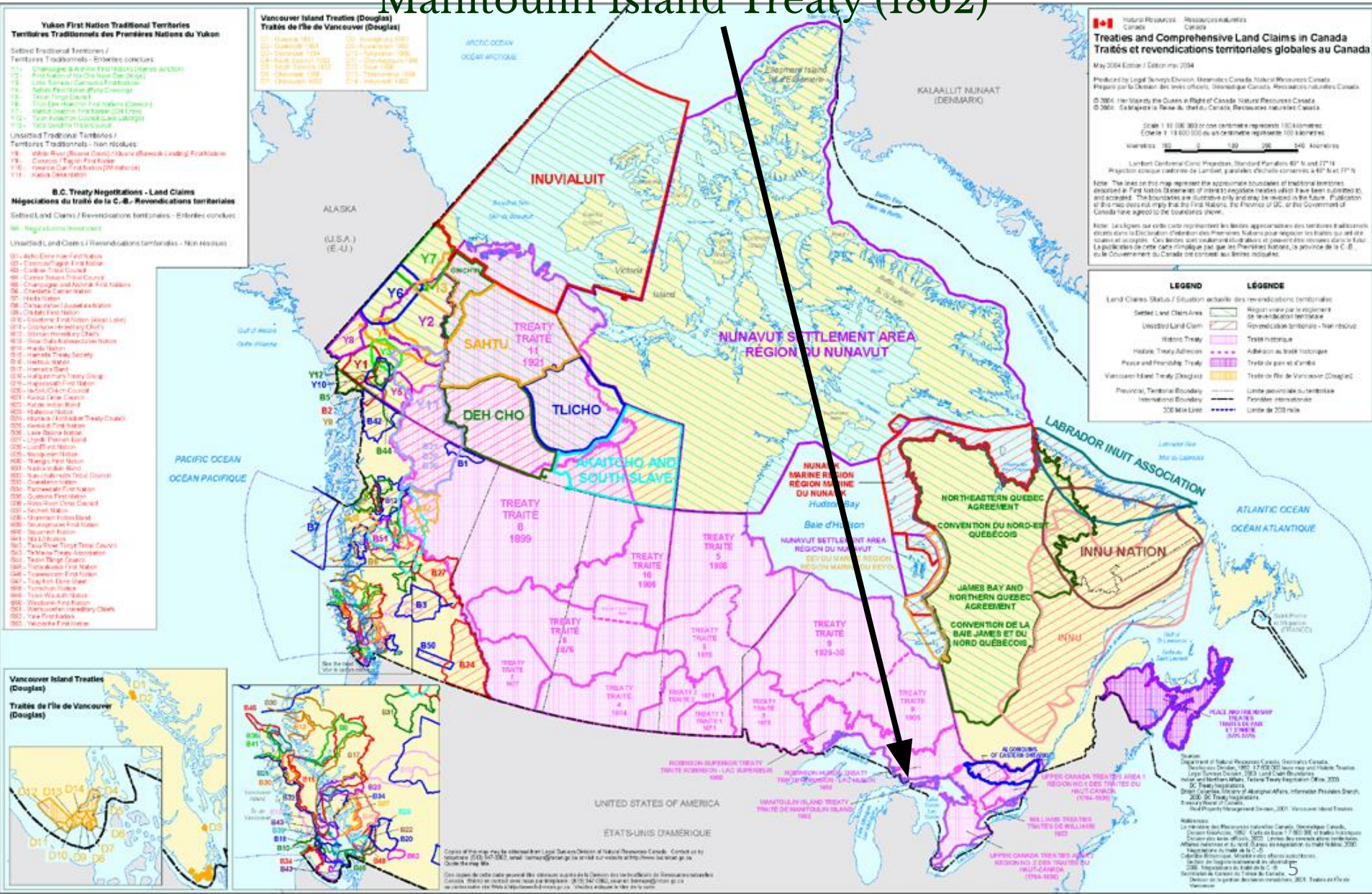
The Wikwemikong Indian Residential School (Roman Catholic) Spanish, Ontario

IRSRC RESIDENTIAL SCHOOLS IN CANADA



Bond Head - Manitoulin Treaty (1836), Robinson-Huron Treaty (1850-1854)

Manitoulin Island Treaty (1862)

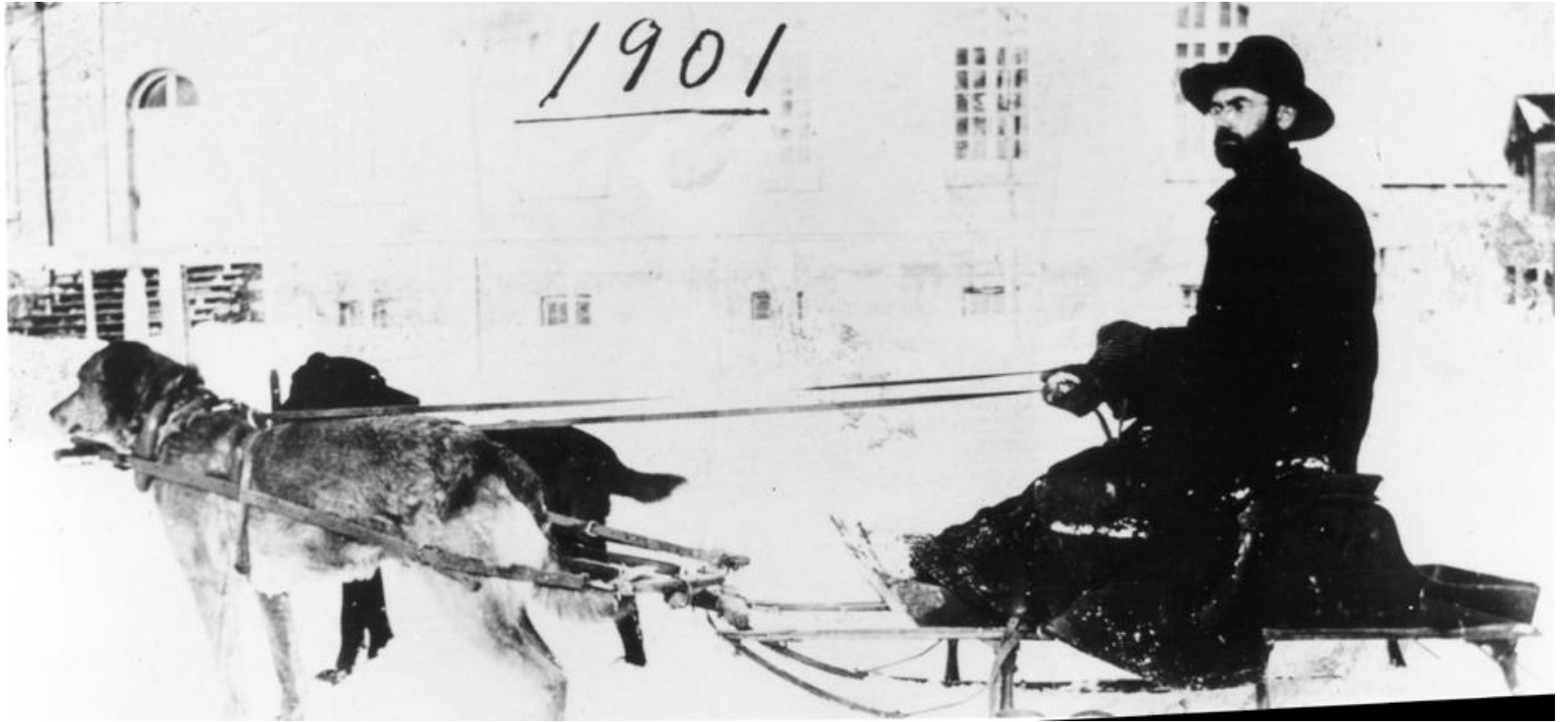


Father William Maurice, sj fonds

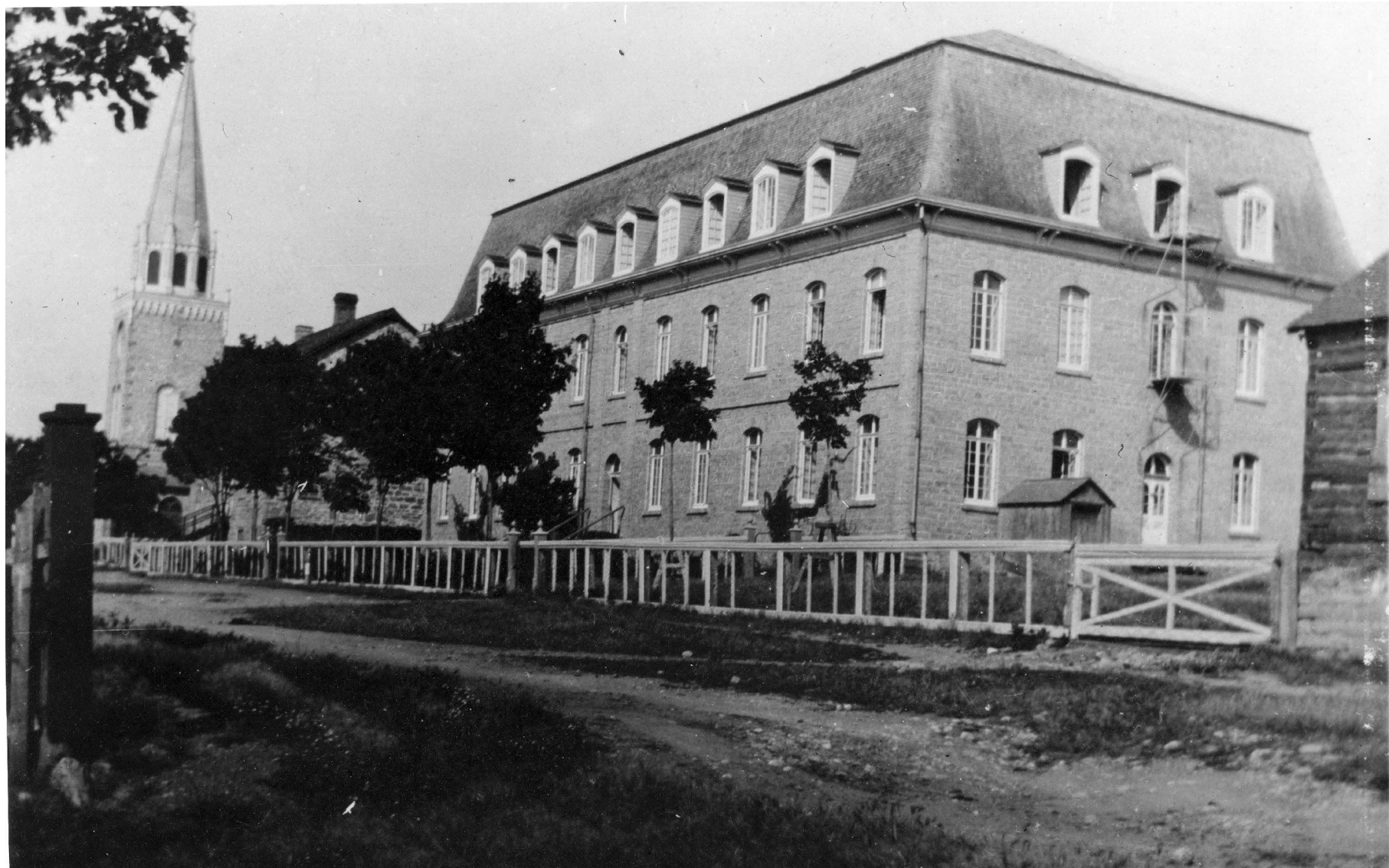
Wikwemikong First
Nation, 1910



2010-008_003_054



2010-008_002_049



2010-008_003_055



2010-008_002_007



2010-008_003_056

Indian Day School,
ca. 1930



Wikwemikong Indian Day
School, 1928



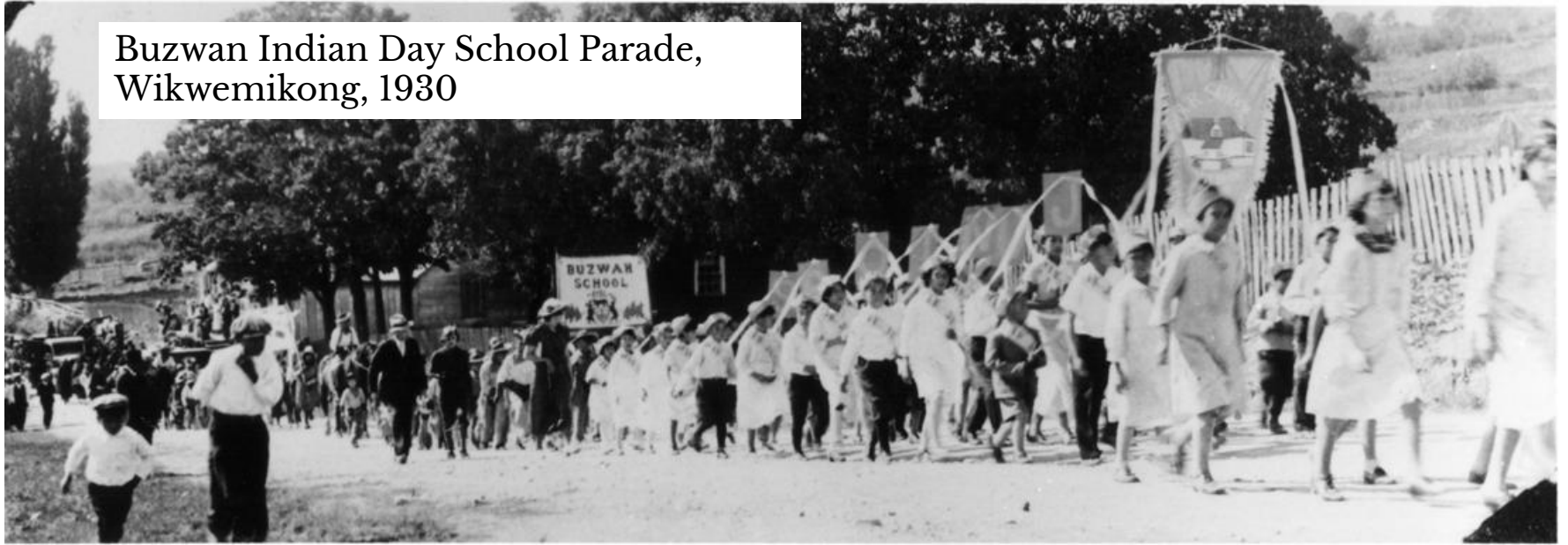
2010-008_002_019



Buzwan Indian Day School Parade,
Wikwemikong, 1930

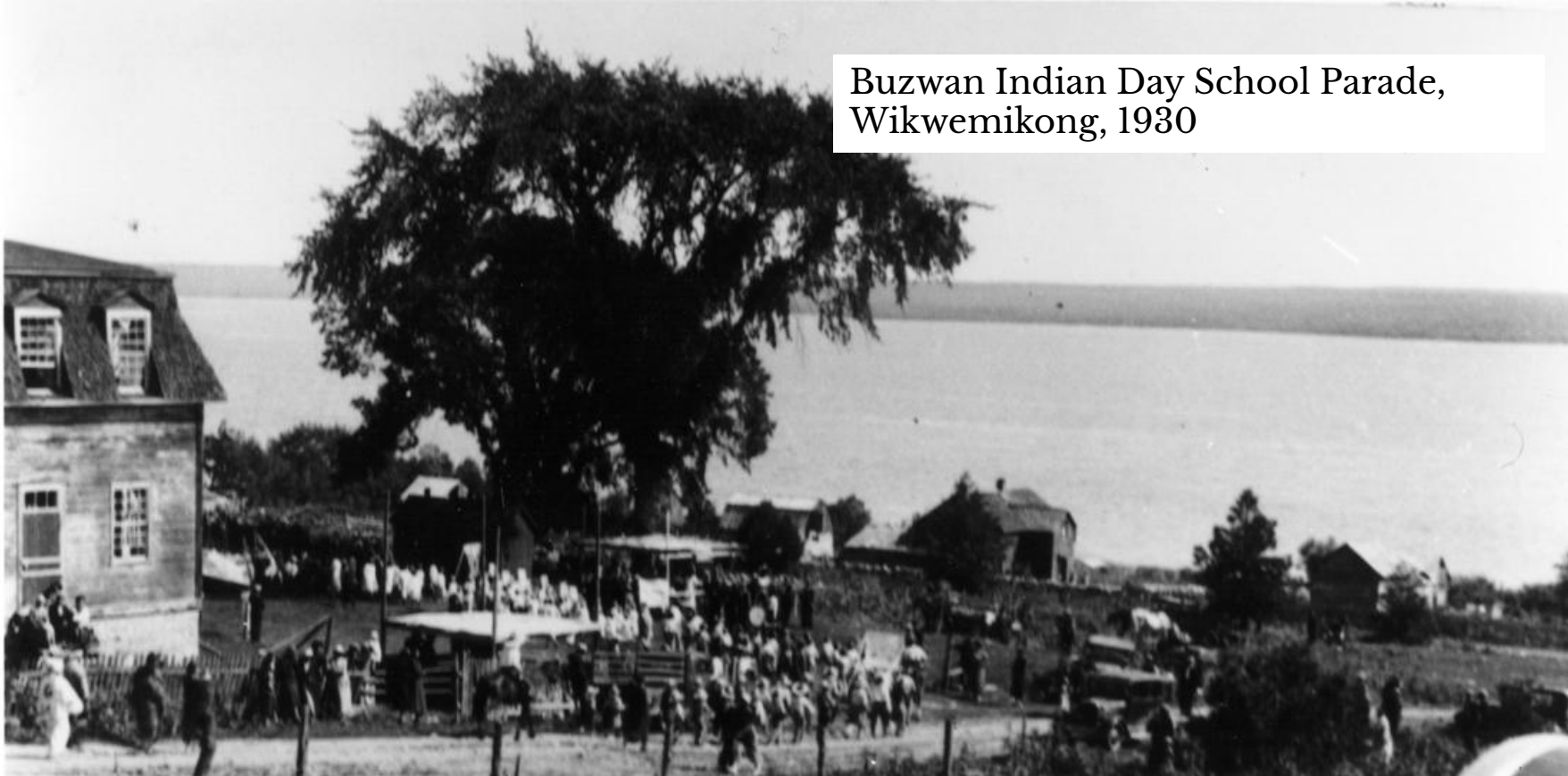
2010-008_002_036

Buzwan Indian Day School Parade,
Wikwemikong, 1930



2010-008_002_054

Buzwan Indian Day School Parade,
Wikwemikong, 1930



2010-008_002_055



2010-008_002_005

1925-1928



1928



1928



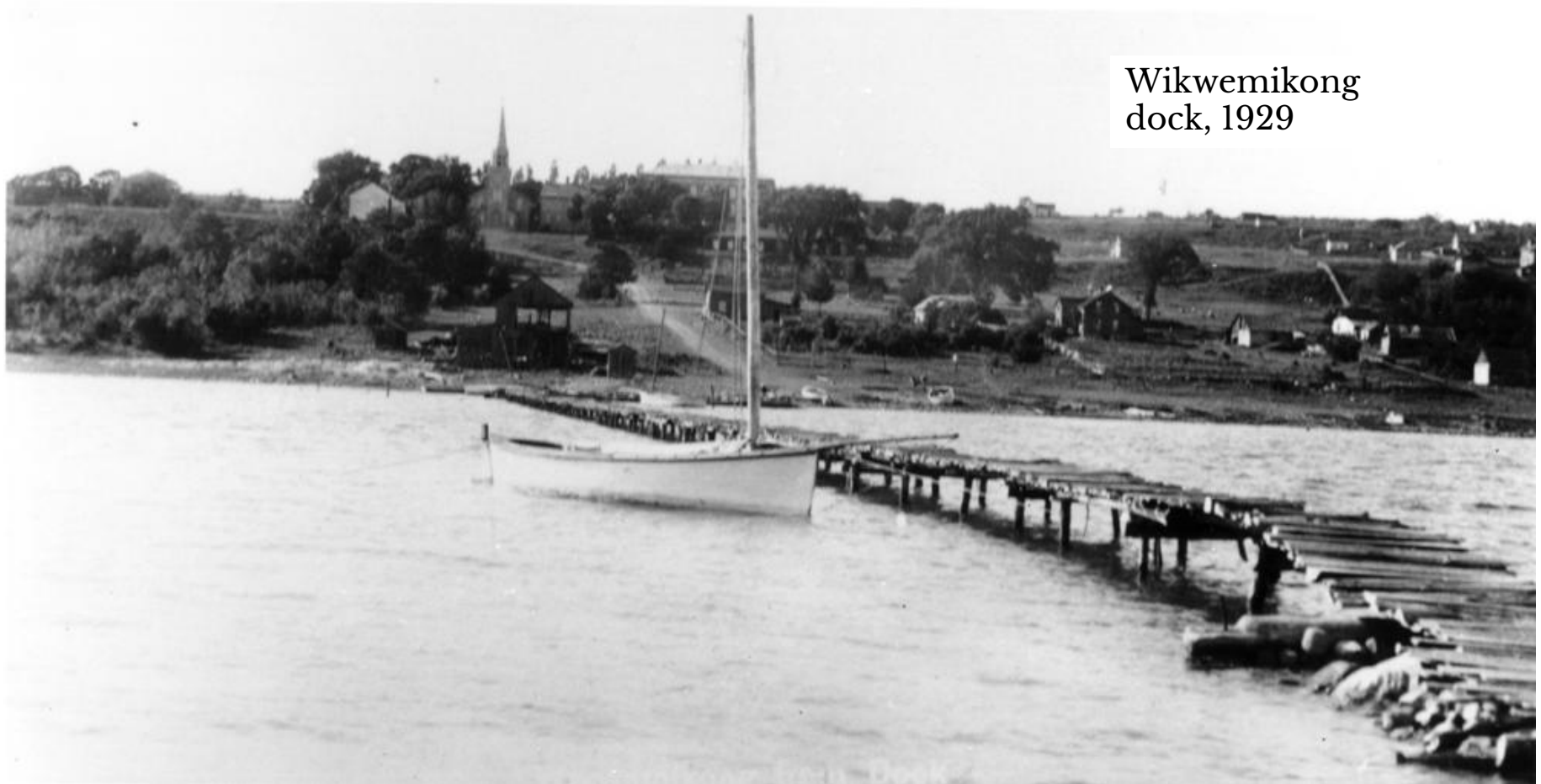
2010-008_002_021

1928



1928





Wikwemikong
dock, 1929

2010-008_002_051

West Bay, 1945



2010-008_002_039



2010-008_002_041



2010-008_002_034

Indian Day School,
West Bay, 1945



2010-008_002_040

Mrs. Cox's class, Kaboni
Indian Day School



2010-008_002_043

Baseball game, West Bay, 1945



2010-008_002_046



Alter boy picnic, Wikwemikong F.N., 1937

Back Row: Fr. E. Flaherty S.J., Ernest Oshrabiwisens, Andrew Manitowabi,
Stanley Odjig, (hidden) Stanley Eshkibok, John Kegige,

Front Row: Paul Trudeau, Clarence Wakegijig, Theadore Trudeau, Donald
Odjig, (Scottie), Tommy Trudeau, John Mandawin

2010-008_002_057

Wikwemikong F.N.



2010-008_003_058



Wikwemikong F.N., 1936

Wikwemikong
F.N., 1928

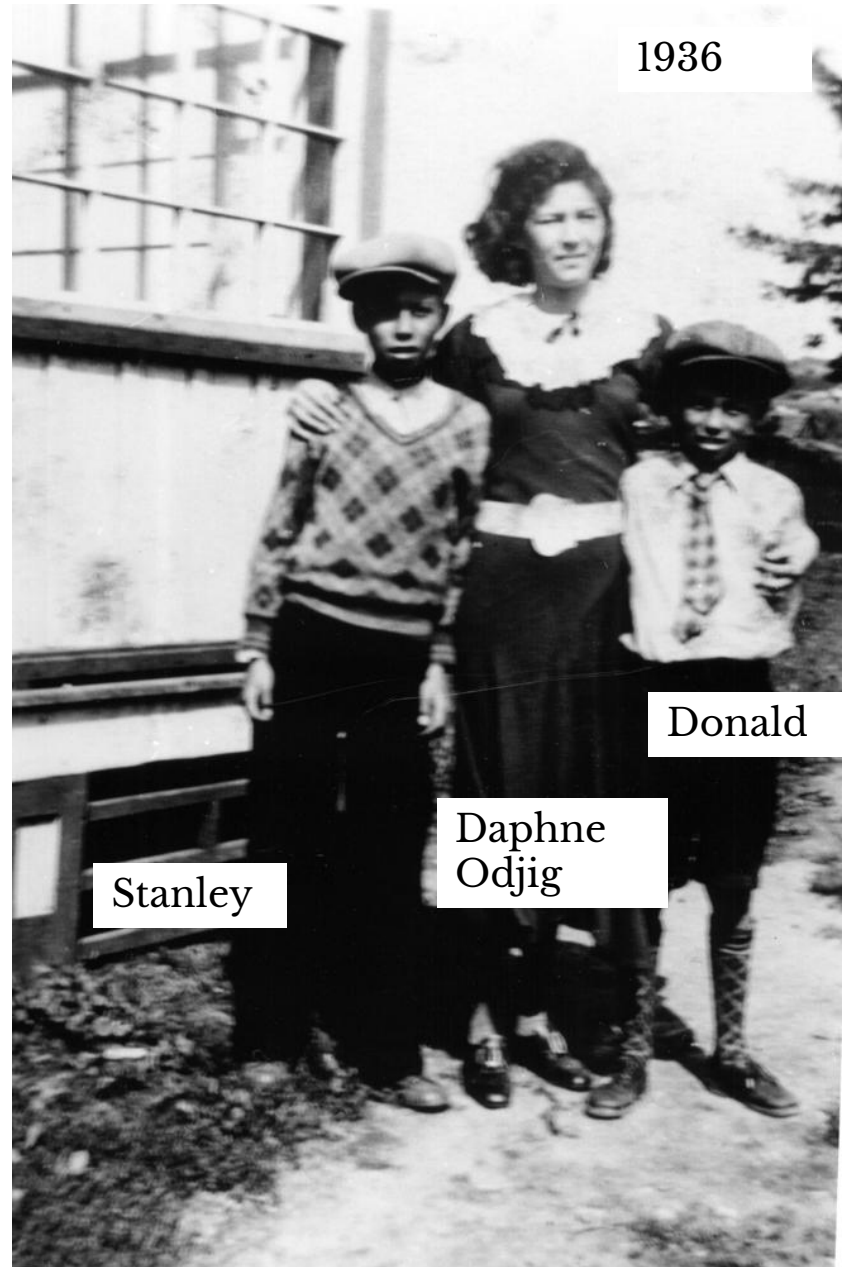


2010-008_002_011



1928

2010-008_002_024



1936

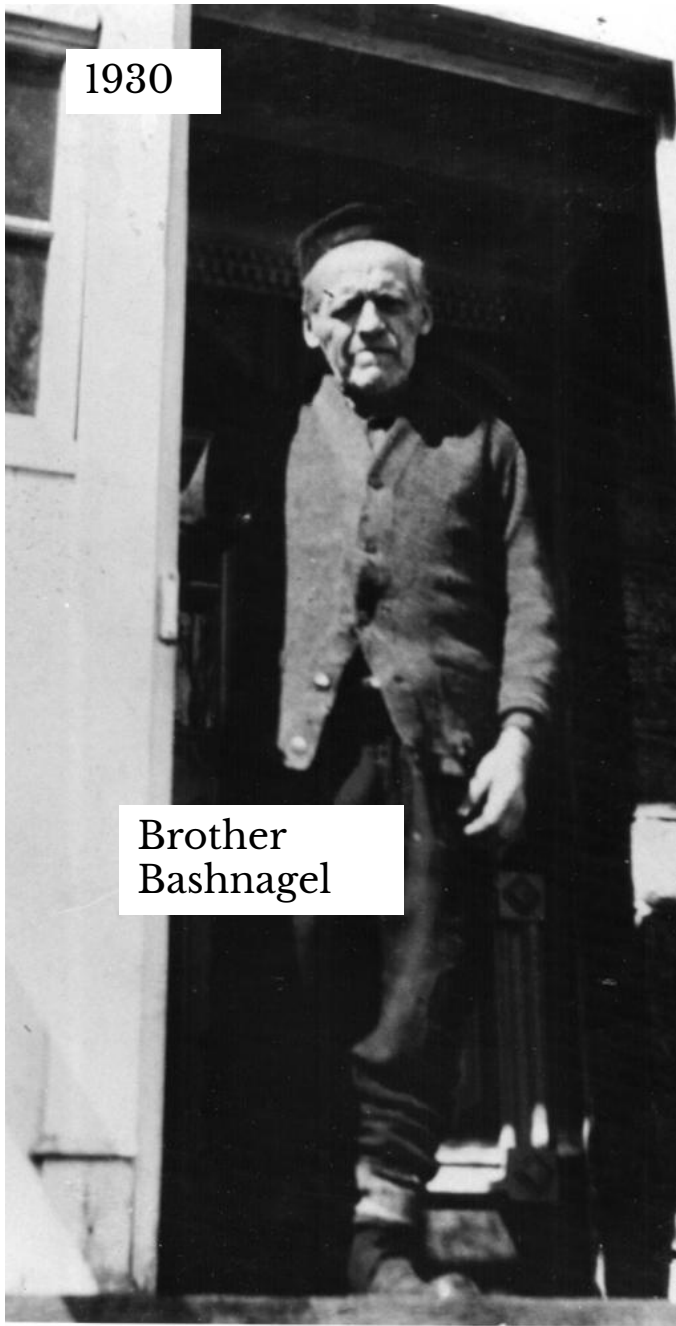
Stanley

Daphne
Odjig

Donald

2010-008_002_029

1930



Brother
Bashnagel

2010-008_002_028

1937



Buswa

2010-008_002_060

Cemetery, Wikwemikong F.N., 1928



2010-008_001_018

Cemetery, Wikwemikong F.N., 1928



2010-008_002_002

1928



2010-008_002_025

Charlie King,
1936



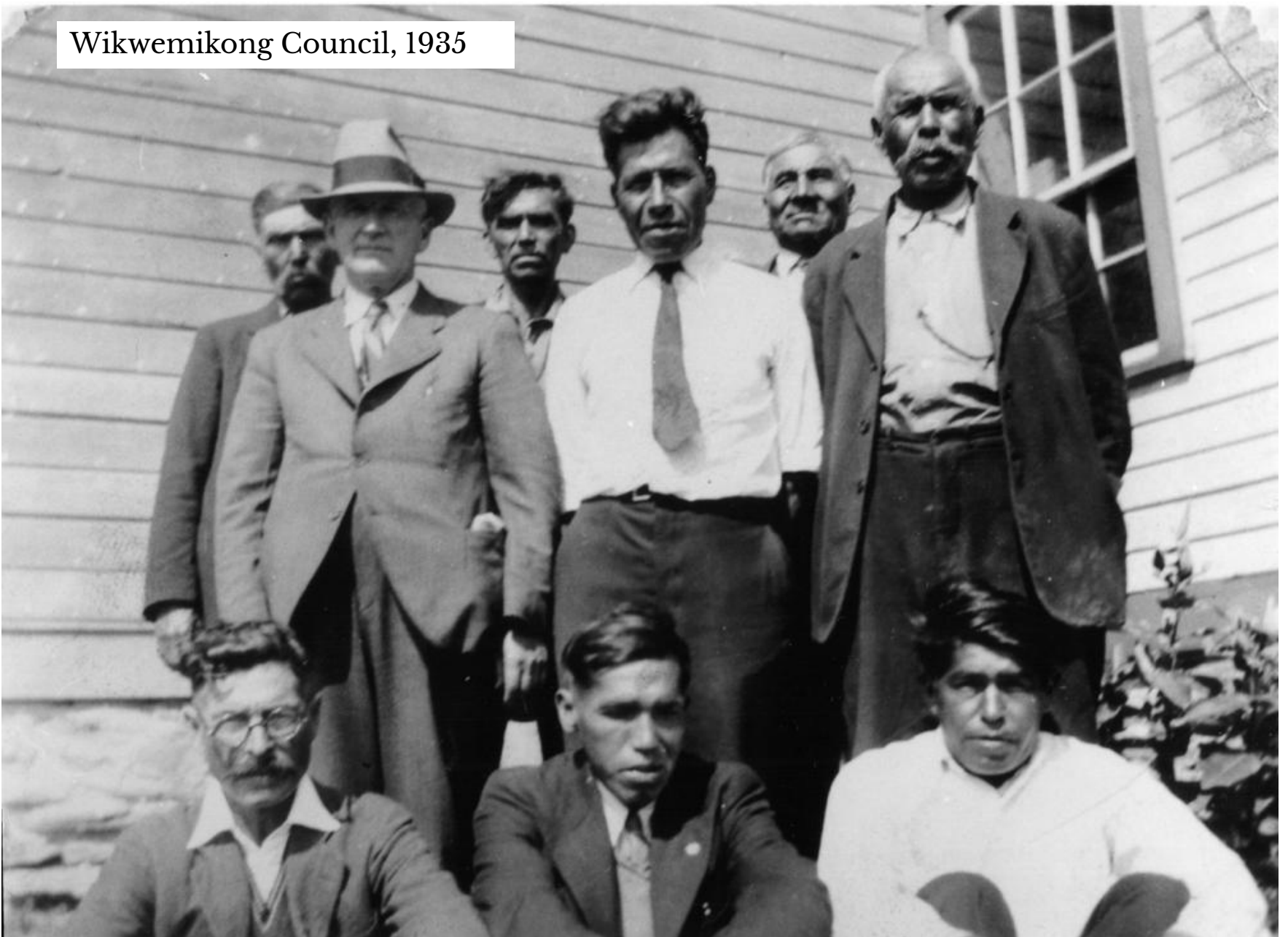
2010-008_002_062

Charlie King's Family,
Wikwemikong FN, 1930



2010-008_002_050

Wikwemikong Council, 1935



2010-008_002_052



1931

Daphne Odjig

2010-008_002_030



1937

Daphne Odjig

2010-008_002_033



Brother Clark,
Wikwemikong F.N.

2010-008_003_059



Wikwemikong
F.N.

Fr. John B. Proulx,
the first parish priest.

2010-008_003_057



Donald Fishier
"Oojig"

Photo also includes: H.B. Williams, John Namabian, Fox,
and Cpt. Gidden

2010-008_002_037



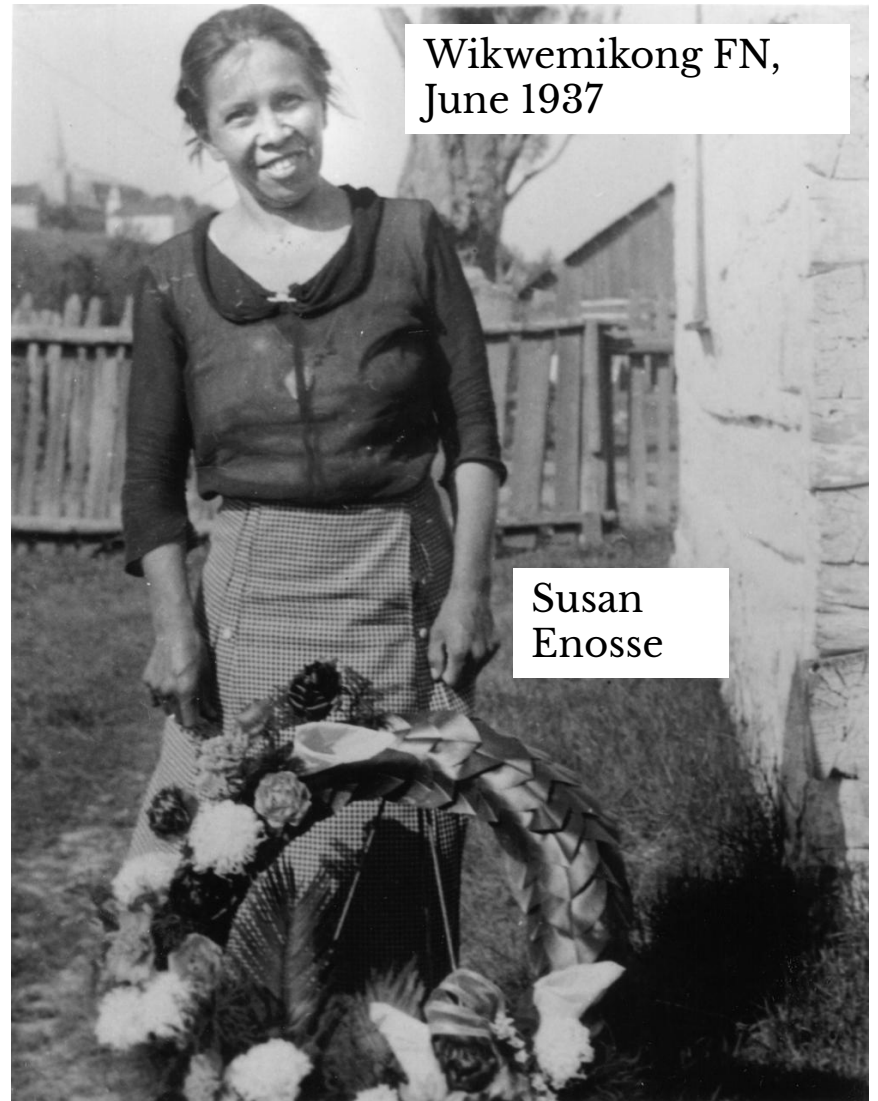
2010-008_002_044

Wikwemikong
FN, 1930



Joemin
Peltier

Wikwemikong FN,
June 1937



Susan
Enosse

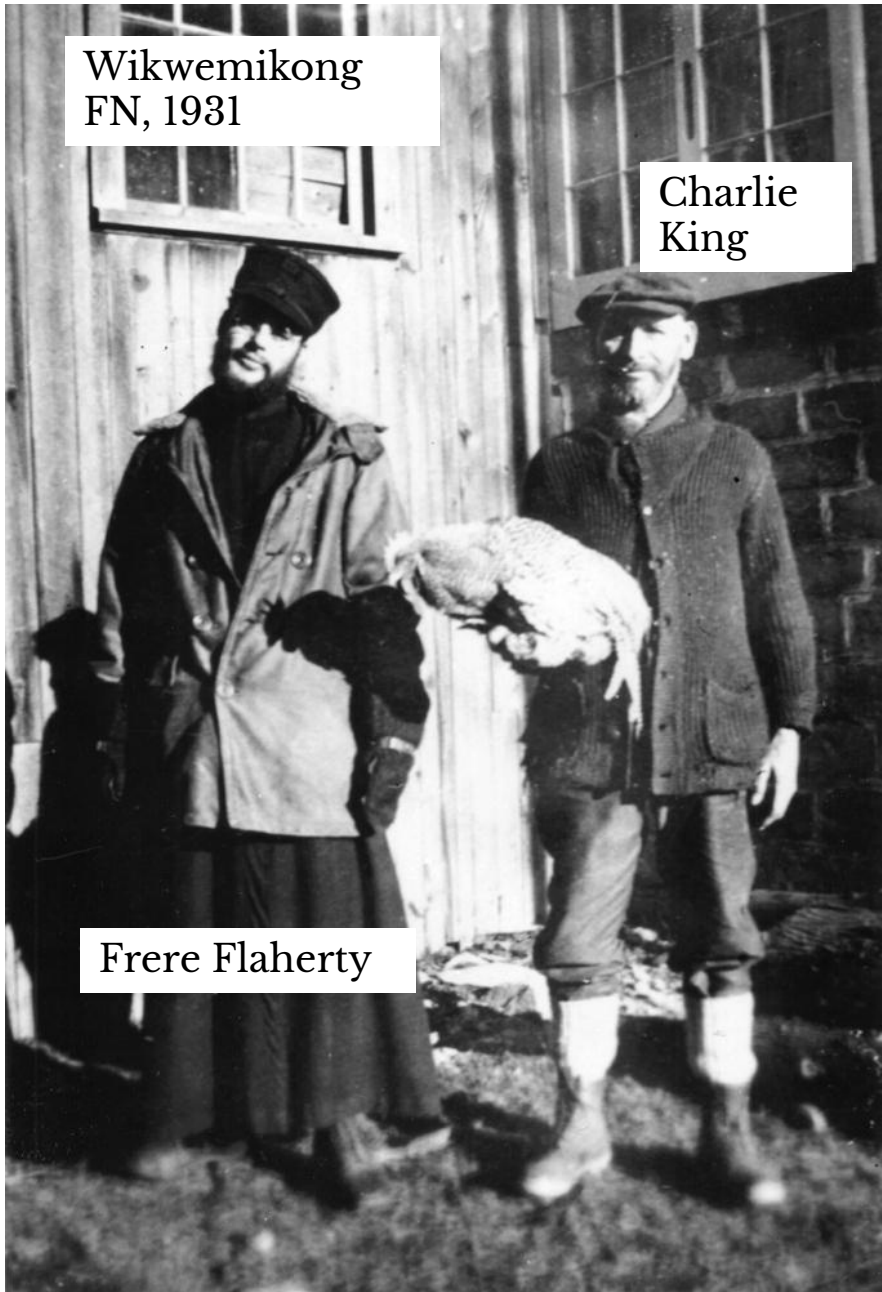
2010-008_002_058

2010-008_002_047

Wikwemikong
FN, 1931

Charlie
King

Frere Flaherty



2010-008_002_031

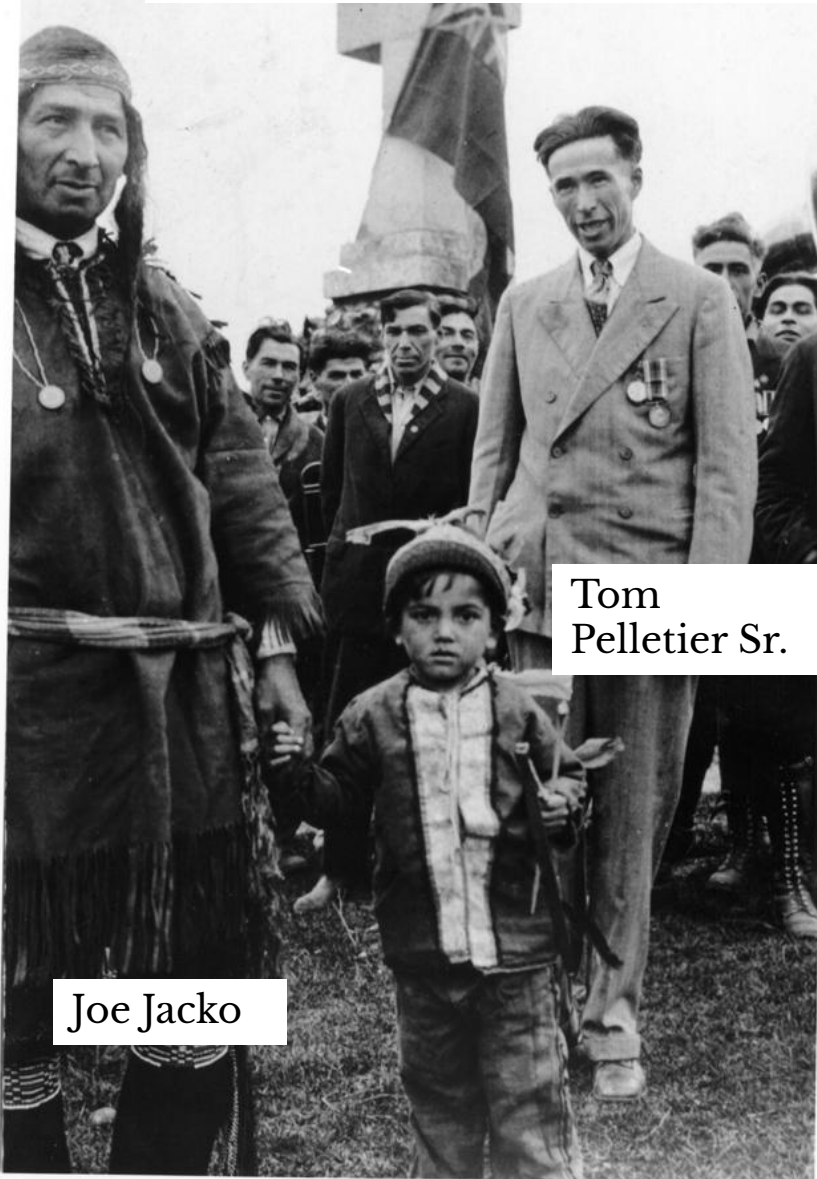
Wikwemikong
FN, 1930

Charles King &
daughter



2010-008_002_061

Military Monument Ceremony
Wiwemikong FN, 1921

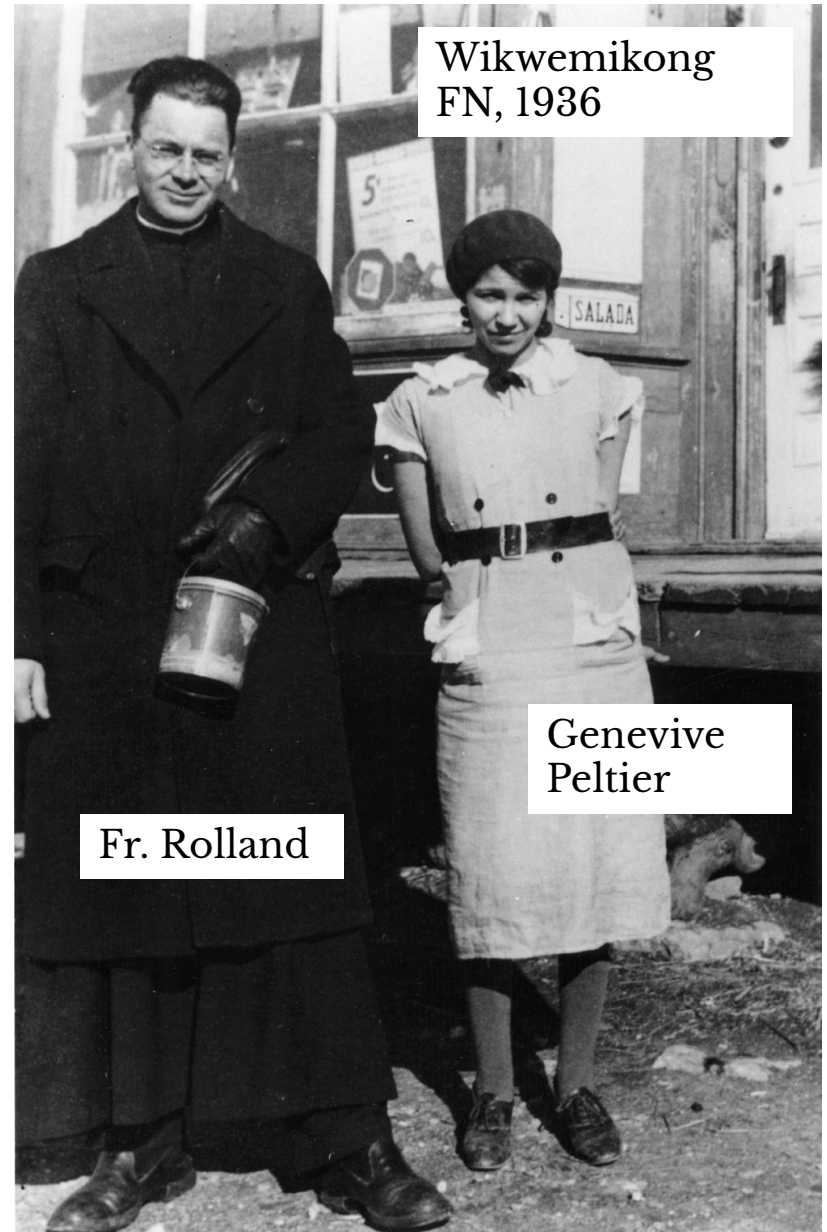


Tom
Pelletier Sr.

Joe Jacko

2010-008_002_059

Wiwemikong
FN, 1936



Fr. Rolland

Genevive
Peltier

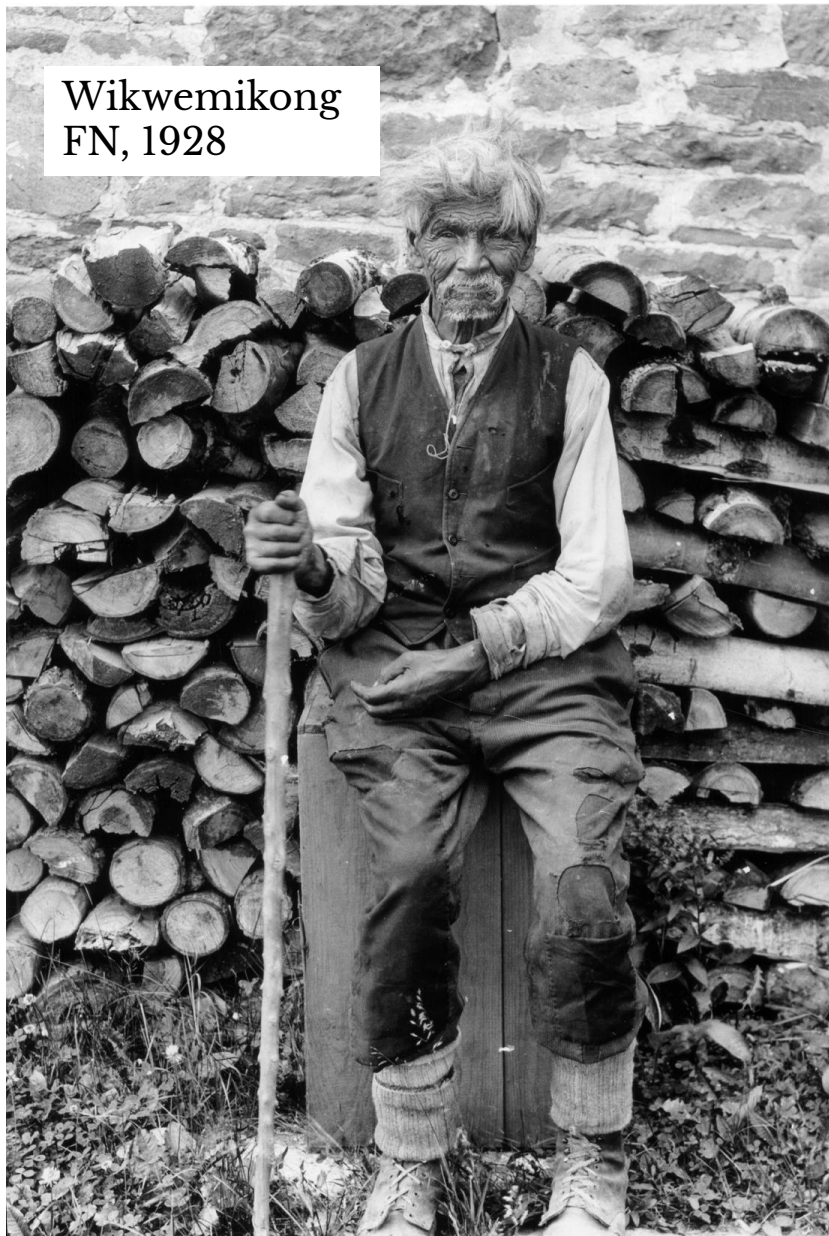
2010-008_002_027

Kinoshewe Defence
Wikwemikong F.N.



2010-008_002_048

Wikwemikong
FN, 1928



2010-008_002_022

South Bay,
1926-1928



Joe Bemanakinang & Family

2010-008_003_006

South Bay, 1928



2010-008_003_007

Wikwemikong FN, 1936

Pow Wow



Joemin
Peltier

Joe Jacko

2010-008_002_038

Wikwemikong Indian Day School, 1937



Rita
Trudeau

M. Louise Annie
Gonawebi Mandemin

2010-008_002_053

Rita Trudeau's class, Wikwemikong Indian Day School, 1937



2010-008_002_056

Wikwemikong
FN, 1928



South Bay, 1928



2010-008_003_005

Wiwemikong
FN, 1928



2010-008_002_003

Wikwemikong FN, 1928

Casimir
Trudeau

Veronique
Becarnan

John Jane

Anna Agyele
Gaboni

Wikwemikong FN, 1928

Casimir Trudeau

John Jane

Anna Agyele
Gaboni

Veronique
Becarnan

Wikwemikong FN, 1955

Angelique
Recollet



2010-008_002_045

Mary Lou Fox Collection



2010-008_002_001



Mary Lou Fox

Bessie Fox

2011-056_001_010



2011-056_001_039



2011-056_001_038



2011-056_001_037



2011-056_001_035



2011-056_001_036



2011-056_001_020



2011-056_001_015



2011-056_001_012

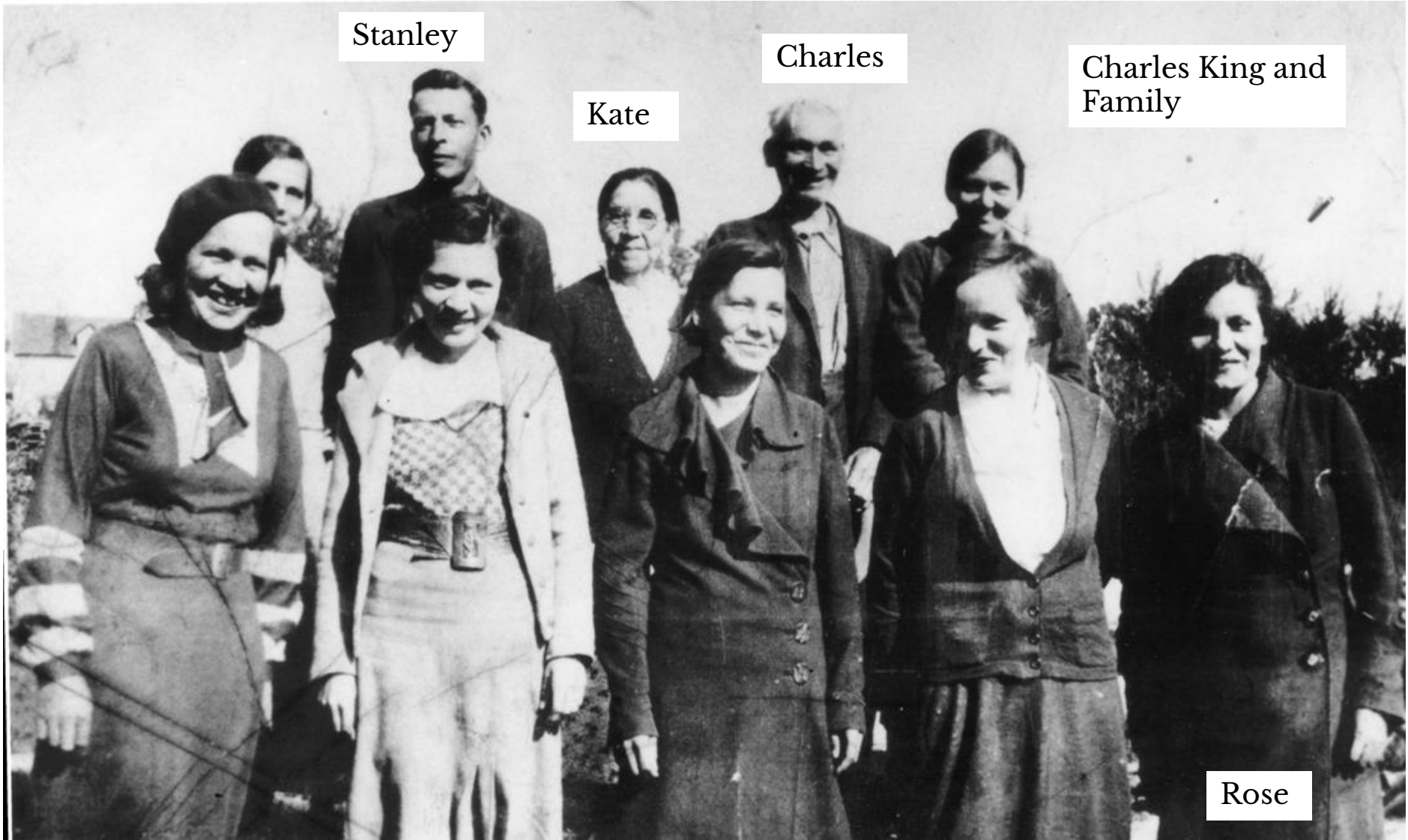


Rose Fox

Mary Lou
Fox

Bessie
Fox

2011-056_001_014



Stanley

Charles

Kate

Charles King and Family

Rose

Charles King and
Family



2011-056_001_018



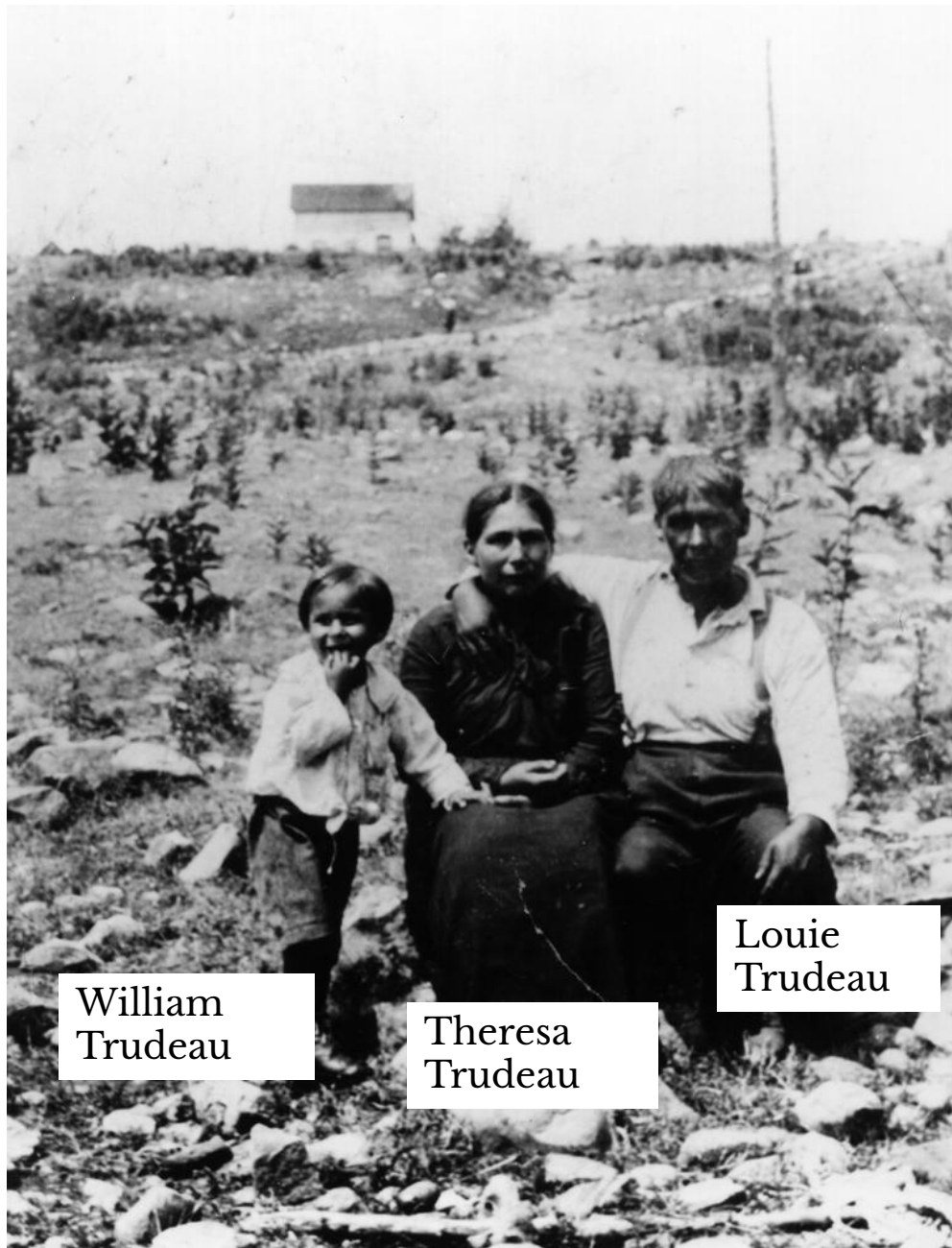
Andrew
Manitowabi

Josephine
Manitowabi

Mike
Desmoulin

Wilfred
Shawanda Sr.

2011-056_001_033



William
Trudeau

Theresa
Trudeau

Louie
Trudeau

2011-056_001_022



Mary
Ajawankwat

Moses
Ajawankwat

2011-056_001_021



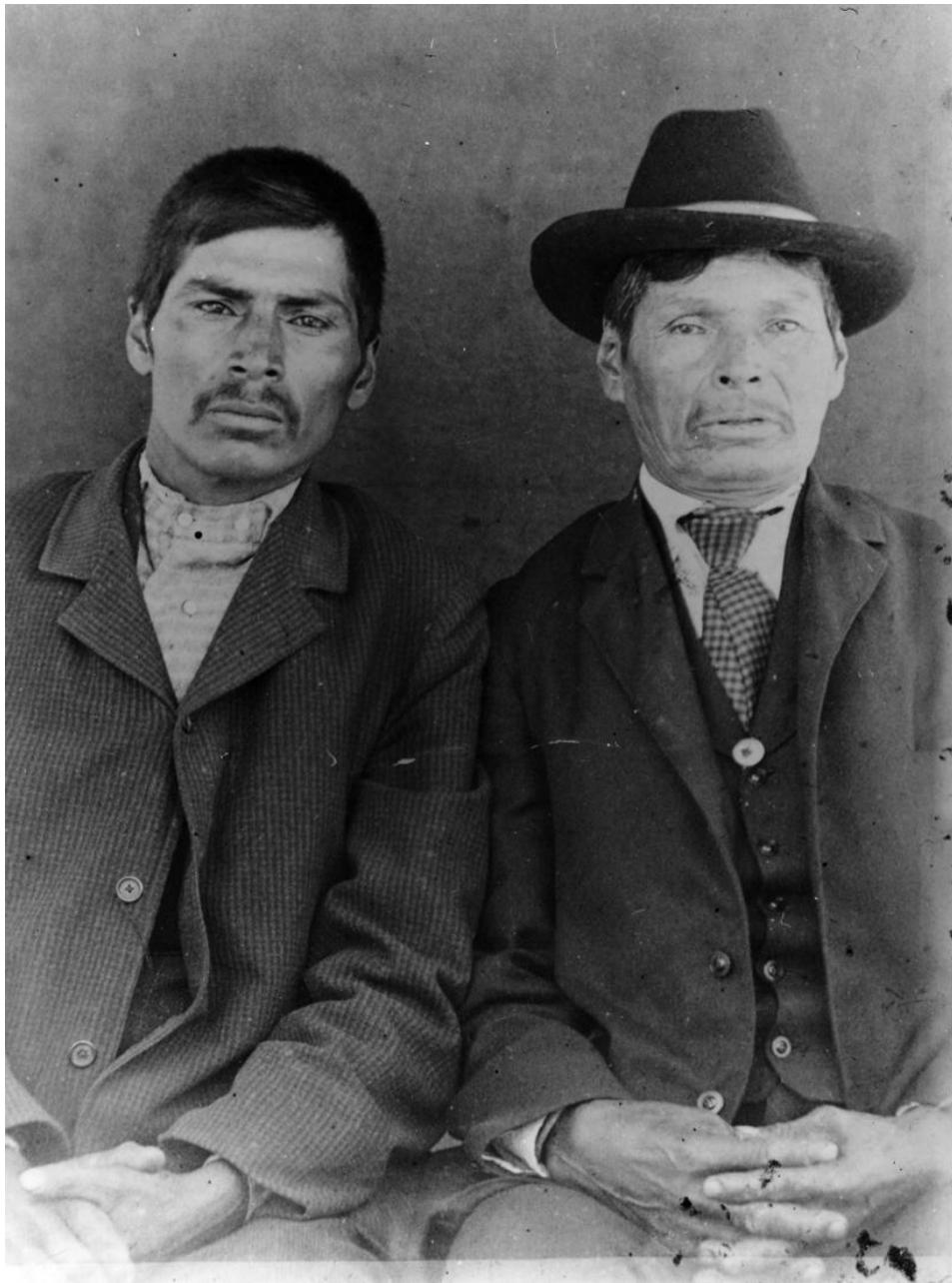
2011-056_001_008



2011-056_001_016



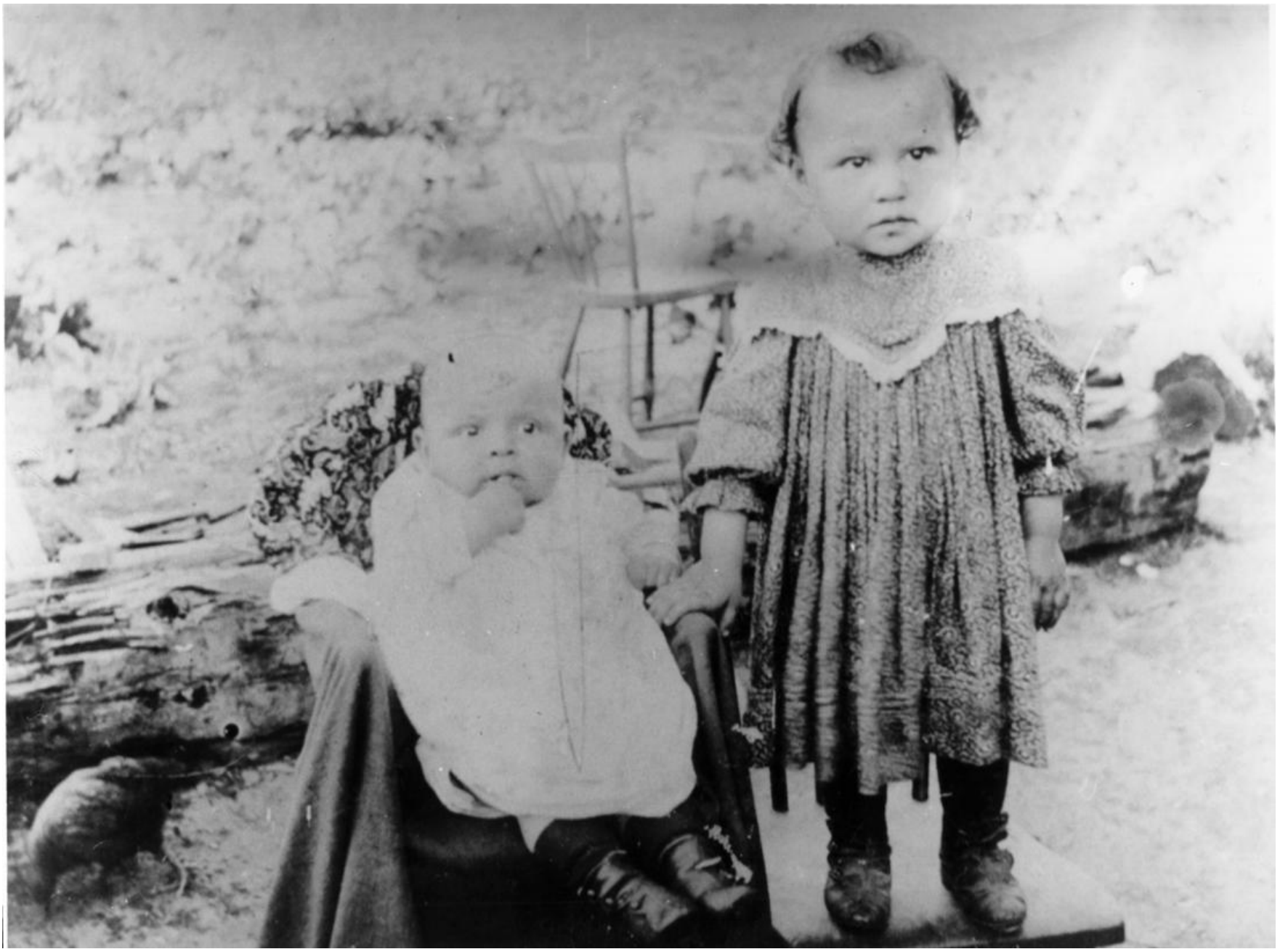
2011-056_001_017



2011-056_001_013



2011-056_001_009



2011-056_001_011



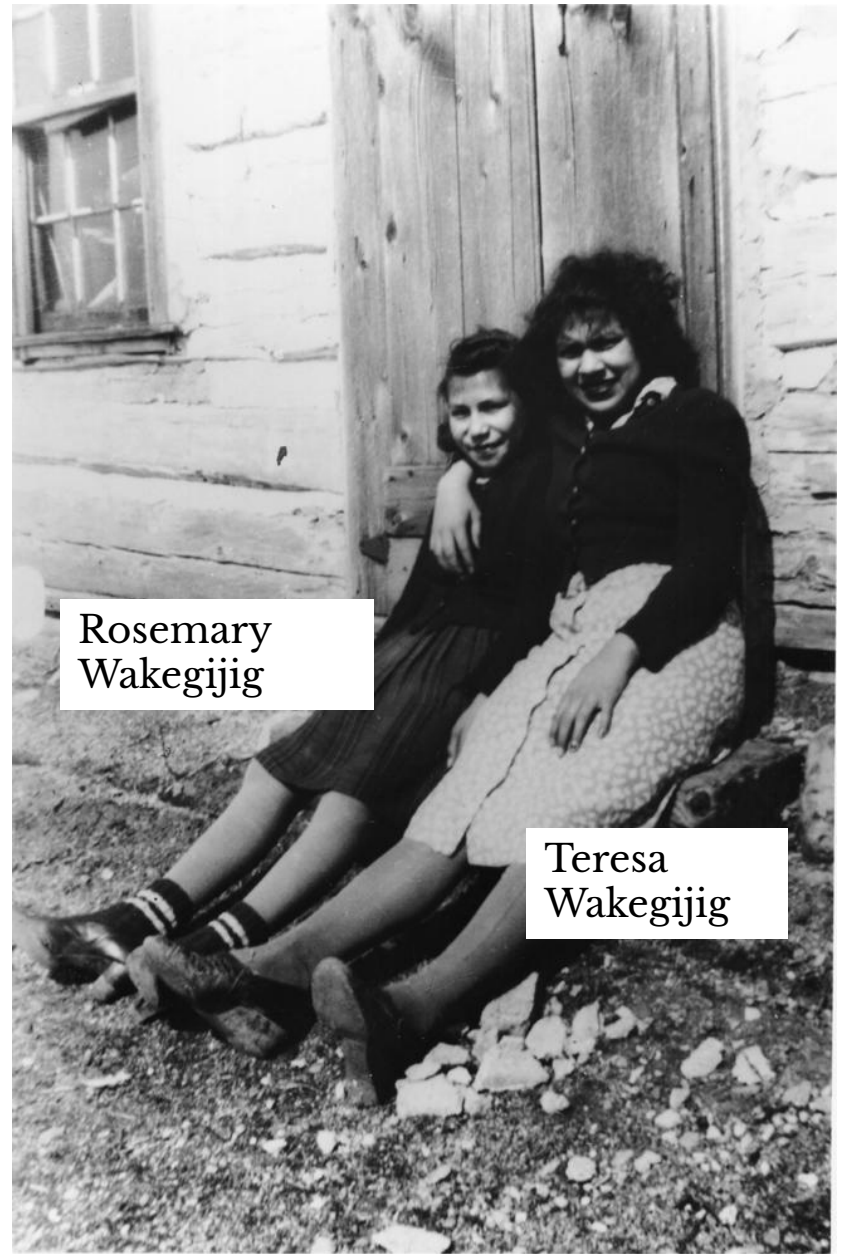
2011-056_001_007



Margaret
Recollet

Teresa
Wakegijig

2011-056_001_019



Rosemary
Wakegijig

Teresa
Wakegijig

2011-056_001_006



2011-056_001_005



2011-056_001_004



2011-056_001_003



2011-056_001_002



2011-056_001_001



2011-056_001_032



2011-056_001_031



2011-056_001_030



2011-056_001_027



2011-056_001_028



2011-056_001_027



2011-056_001_029



2011-056_001_026



2011-056_001_025



2011-056_001_023

Shingwauk Residential Schools Centre

Algoma University
1520 Queen Street East
Sault Ste. Marie, ON
Robinson-Huron (1850) Treaty Territory
P6A 2G4



Email:

ShingwaukDG@algonau.ca

Phone: (705) 949.2301 Ext. 4623
or 4279

Website:

<http://archives.algonau.ca>

June 2014