

Photographs



Kathleen D. Scartlett  
St. John's Indian School,  
Chapleau, April 3<sup>rd</sup> 1935 —  
Nov. 30<sup>th</sup> 1936

Loon Lake  
Near Chapleau, Ontario  
1936.





Annie

Annie Commandant  
Age 4 years  
1935



Rita & Annie

Rita Williams  
Age 5  
Annie Commandant  
Age 4  
1936



Annie Commandant  
Age 5  
1936





Reta Williams  
Age 6  
1936



Virginia Pavis  
1936



Grace Isarkoff  
1936





Emma Trapper  
Beatrice "

Emma went into  
hospital November  
1936



Miss Shepherd & Junior Girls.

Priscilla Shepherd  
of  
Junior Girls  
1936



Junior Girls  
1936





Row 3 - Picnic - Little Bay

Row 3  
Reward Picnic  
at Little Bay  
→  
1935

Some of the  
Junior Girls  
off to pick  
blueberries

→  
July 1935



myself & some Junior Blueberries



May 24. Picnic across the river.

"Big" Juniors  
24<sup>th</sup> May  
Picnic across  
the river

Priscilla Shephard  
& Kay Scarlett

→  
1935



Mrs. Bowby  
Junior Girls  
October  
1936



Junior Girls  
off for a  
walk  
1935

Junior girls out for a walk — near the gate.

Junior girls in  
Swimming  
at School Pool  
Kitty, Grace,  
Beatrice, Flora  
1935



Grace, Beatrice, Flora



Junior-Girls  
in School  
Pool

1935



Junior Girls



Howard . Charlie . Rob.

Boys in  
Pool.  
Howard &  
Charlie  
Thompson.

1935

First Day  
of Skating

November 9

1935



First Skating Year. Pomeroy, Wash. 1935



First Day's  
Skating  
November 9  
1935



Lower Basin - same day - Chester

Senior Boys  
+  
one Junior  
1935.



Boyles

Hawes

Charlie Miller  
Ray Thompson  
1935.



Charlie  
Ray





Annie Frank.

Annie Frank (Trapper)  
1935  
Left for Hannibal Bay  
June 1935



Caum Vale  
Lydia - Clara  
Clarence - Dorothy  
Saylors -  
1936.  
Clara left - June 1936



Redfern Louttit

Redfern Louttit  
1935  
Went to Wycliffe  
September 1935



Senior Girls  
1935

Rose Lundus  
Grace Diamond  
Annie Frank  
Frances MacCarty  
left  
Leaving to you



Senior Girls



Margaret Seylas  
Frances Mac  
Gladys DeCaine  
Irene Kitchel  
Clara Seylas  
farewell party  
for Frances Mac  
1935

Eleanor Cell  
Candidate  
1935

Senior Girls

Nancy MacKeehan  
left

June 1936



Eleanor Cell & Senior girls



Kay Scarlett  
 Irene Hoff  
 Gladys De Caine  
 Lydia Saylor  
 June 15 - 1935



Myself, Irene, Gladys, Lydia



Billy, Elizabeth, Hannah, Beulah, Gladys, Lydia, Irene

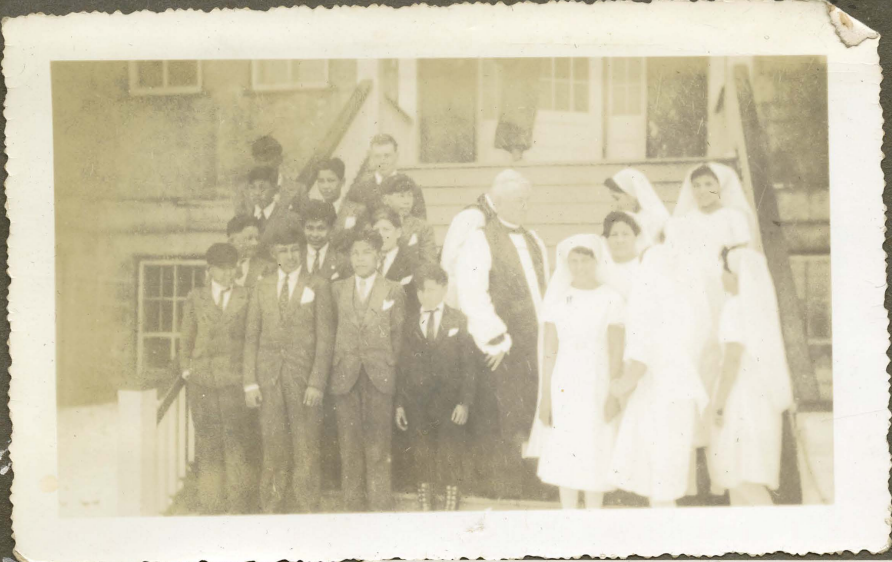
Annie Frank  
 Elizabeth Libens  
 Hannah Squirrel  
 Beulah Sebastian  
 Gladys de Caine  
 Lydia Saylor  
 Irene Hoff

June 15 - 1935

Some of the  
 School & Town  
 girls at  
 Bucciarelli's  
 Lake  
 Summer of 1936







Confirmation Class  
 1936  
 Bishop Anderson  
 of Moose Lake  
 Nancy, Mary S.  
 Eliza  
 Irene, Margie.

14 <sup>00</sup> aced Squirrel  
 Frances Blacksmith.  
 17 quils picked up  
 quarts of berries in  
 July 1<sup>st</sup>, 1936



Ella Green  
 nurse at Hospital  
 for incurables  
 Dism Ave.  
 on into  
 Graduate of the  
 School  
 Upper Dism  
 1935.





John & Lizzie Mennaisin

John & Lizzie Mennaisin  
Chaplain Indian Reserve  
John and Lizzie 9'36



Senior Girls at Bucciarelli's Lake 1936.



Senior Girls at Bucciarelli's Lake. Mrs. Wilson in foreground





Junior Girls  
in School  
Swimming  
pool.

Summer  
of  
1935

The Swimming Pool

Chief Chesewini  
& some of the boys

Starting on a  
trip back to  
their winter camp  
in the husk  
1935



Same as  
above







*ditto.*

The Primate  
visited the  
School  
October  
1935  
during  
his stay  
in the  
~~vicinity~~  
of  
The Town  
Church.

Luigi Marchoni  
leaving for  
his traps

1935



The Primate's Visit (Oct. 1935)

The Primate's Visit  
October 1935





From Sr. Boys Dormitory 1935.

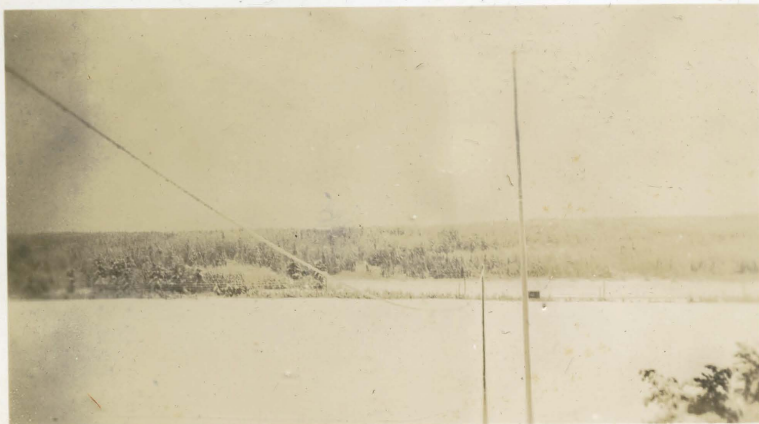
Scene from  
the Senior Boys  
dormitory  
1935

Scene from the  
Junior Boys  
Dormitory  
1935

(Pipe to power-house  
in back ground)



From Jr. Boys Dormitory 1935



View from Girls Cloak Room - 1935.

Scene from  
The Girls Cloak  
Room  
1935



Scene from  
 Senior Girls  
 Dormitory  
 Showing -  
 ten. house  
 barn -  
 garage +  
 the Coan's Cottage



From Sr. Girls Dormitory 1936



View from Bakery

Scene from  
 the Junior  
 Girls Dormitory  
 Showing Power  
 house +  
 swimming  
 pool

Scene from  
 my window

(printed  
 backwards)







Douglas + Susie.

Douglas +  
Susie

Taken from  
my window

1935

Our fuel  
supply

80 cords

1936



The School  
rick

1935-





From my  
window

Temperature

20° below 0

1935



From my Window — 26° below.



32° below  
The train  
had passed  
fifteen minutes  
before, but the  
smoke didn't  
rise more than  
ten feet it was  
so cold  
1935

44° below

The team  
is going  
across the  
river to  
cut wood

1935







The service  
Room

1935

Service Rooms.

The Senior  
Dormitory  
showing about  
one-half <sup>greater</sup> of  
the room  
1935



Senior Dormitory



Junior Dormitory

The Junior  
Dormitory

1935





Children's dining-room  
Great snow half-way  
up windows  
1935

School flag at  
half-mast when  
King George V  
died - 1936



From the Seaman  
Gills dormitory





School from Across the River

The school taken from across the river.  
1934



Gym Room Harvest Thanks giving

The School's Harvest Thanks giving  
1934





The river  
beade the  
Power-house

1936



Lower Dam

The Lower dam  
1936



The Lower Dam

The Lower  
dam

1935





Near the Boat House

Near the  
school  
boat house  
1934



School Boat House - from Big Rock

The school  
boat - house  
from  
"Blueberry Rock"  
1934



Two of the boys fishing  
from the Rock at  
Little Bay  
1936



Looking West  
from the Lower  
Dam  
1936



Looking towards Little Bay from Lower Dam



entrance to Bush by Little Bay

Entering the  
bush to  
Little Bay  
1936

Little  
Bay  
1936



Little Bay





The Swamp Trail.

Entrance  
to the  
Swamp  
Trail

1935

took Chanon  
& Miss ball

Miss Jones  
&  
Miss Fair  
on the River  
at Little Bay  
1935



Miss Jones & Miss Fair on the ice at Little Bay



Miss Jones & Miss Fair on Trail at Little Bay

Miss Jones  
&  
Miss Fair  
on the Trail  
to Little Bay  
  
Same day





The Indian  
Village  
from  
our side  
of the river  
April 6/36

The C.P.R.  
Dominion Train  
approaching  
Chapleau

1935



C.P.R. at Blueberry Rock



Same Place

after the  
train passes  
1935



Same  
place  
as above

1935



C.P.R. near Blueberry Rock



Rocking north from C.P.R. bridge

Blueberry  
Rock

from  
C.P.R.  
train

1935

C.P.R.  
track  
near Picnic  
rock.  
Many Pellet  
& Junior Dubs  
ahead

1936







Bucciarelli's

Bucciarelli's  
Post house?  
house

1935



Looking for  
The Top of Bucc.  
hill.

We were looking  
for the bear den  
& Hauser saw  
but we missed  
it

July 1936

Lying down on  
the job at Payne's  
Park.

Look the Senior  
Gib's blueberry  
picking for pocket money  
1934



Little Bay  
1935



Little Bay.



Near "Little Bay"

Between  
Lower Dam  
&  
Little Bay  
May 6<sup>th</sup> 1935  
at the bars.  
1935

Same  
place  
1935



Above the Lower Dam



Half way fall  
between the  
Upper Lower  
Dams.

1935



Half way Rock



Upper Dam

Below the  
Upper Dam  
1935

Beside the  
Upper Dam

1935



The upper Dam





Upper Dam

Same as  
above  
1935

From the top  
of the hill.

Upper Dam

1935



Upper Dam



Upper Dam

Same as  
above



Near Little Bay  
1935



near Little Bay - 1935

Looking across the  
River

1934



across the river -

Miss Jones & myself  
on trail to Little  
Bay - 1935







Boys side of School & Dennis Court.

The Boys  
side of  
the School  
Joe Mulhegimoh  
in foreground

Miss Grant  
&  
Mrs Gibson  
in front  
of the cottage  
1935



Miss Grant & Mrs. Gibson at Cottage



Fred Stilwell.

Fred Stilwell  
The Engineer  
1935.





Myself on the  
front steps  
Nov. 4, 1935

Myself on the  
front steps  
1935



Kay Sealed.

Myself at the  
upper dam.  
Packing in way  
to Brush Lake  
Fred Stilwell,  
Ella Green &  
Myself - 1935





Miss Jones & Miss Jan on  
Trail to Little Bay

Miss Jones +  
Miss Jan on  
Trail to Little Bay  
1936

Jul Stillwell  
1938



Jul Stillwell



Near Upper Dawn

Near the Upper  
Dawn  
1935



Mayorie Neales  
 Mildred Kundle  
 (Fort George)

Cannon Dale  
 1935



Mayorie Neales, Mildred Kundle, Cannon Dale



The Staff & Candidates 1935

Mrs. Calcutt  
 Miss Jones  
 Miss Neales  
 Miss Grant  
 Miss Brown (L.M.)  
 Cannon Dale  
 myself  
 Mildred Kundle (Fort George)  
 Mrs. Bowly  
 Mrs. Gibson  
 Pussilla Shepherd (Black)  
 Fred Chilwell (L.M.)

Miss Jones, Pellett, Scoble  
 Jan

Sunt, Unsworth, Bowly  
 Neales.

Miss Evans (L.M.)

James Hoff - Beta  
 Williams, Annie  
 Commandant  
 Kathleen Kapadishian  
 Annie Trapp  
 Grace Mack  
 1936



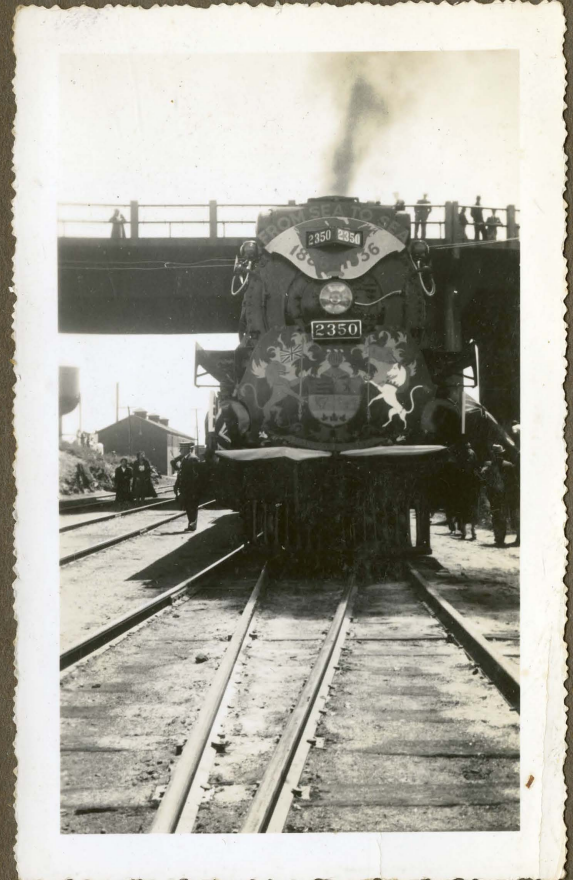




Mrs. Gibson  
Mass Gibson  
1935



Priscilla Shepherd  
1936  
on way to  
"Old Sun" Blackfoot  
School



The C.P.R. train that went  
from Halifax to Vancouver  
celebrating their 50<sup>th</sup>  
anniversary  
1936





Labour Day - 1935

Mrs Bawley, Jimmy, Lucille  
 Miss Jan. Grant, Neals, Fred, Redfern Louttit,  
 Mrs. Gibson



Lucille Shepherd

1936

Just leaving for Glouchan

Mayors Grant



The Service Room  
Beum Hall  
Mrs Gibson  
married  
Nov. 4, 1935



The Wedding  
Guests  
Mrs. Nesbitt  
Mrs. Grant  
Ralph Gibson  
Mrs. Cahow  
The Cannon  
Mrs. Dale &  
Mrs. Bowley

The Wedding  
Table.





A farewell  
party  
for  
Mary Elson  
1936



Same  
as  
above





The  
office  
1936



The staff  
dining  
room  
1936





The  
Junior  
Classroom  
1936



The  
Junior  
Classroom  
1936





The  
Childrens  
Dining  
Room  
1936



The  
Kitchen  
1936





The  
washroom  
1936



The  
Laundry  
1936





The  
Laundry  
1936



The  
Baiter  
Room  
1936.

