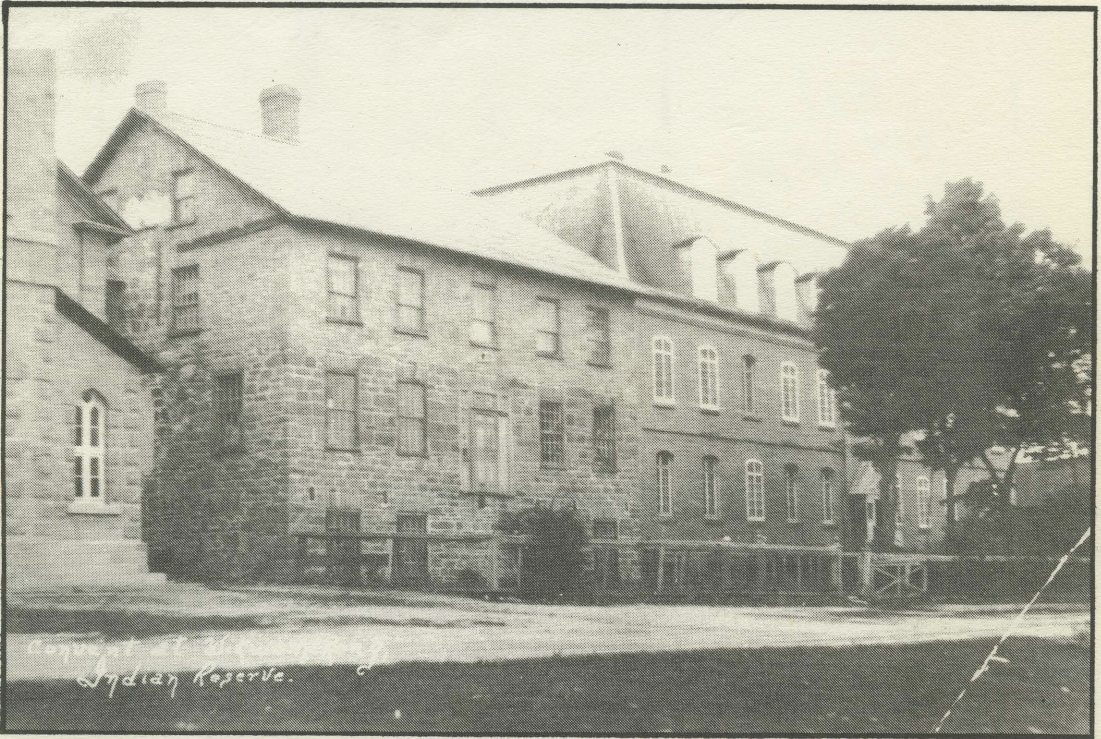


A SYNOPSIS
OF THE HISTORY OF
WIKWEMIKONG, ONTARIO

1st CHURCH AT WIKWEMIKONG 1670
CORNERSTONE OF THIS CHURCH BLESSED JULY 3, 1849
CHURCH BLESSED JULY 25, 1852 - COMPLETED DEC. 1853



1st RESIDENCE BUILT 1846-47
(in the middle)

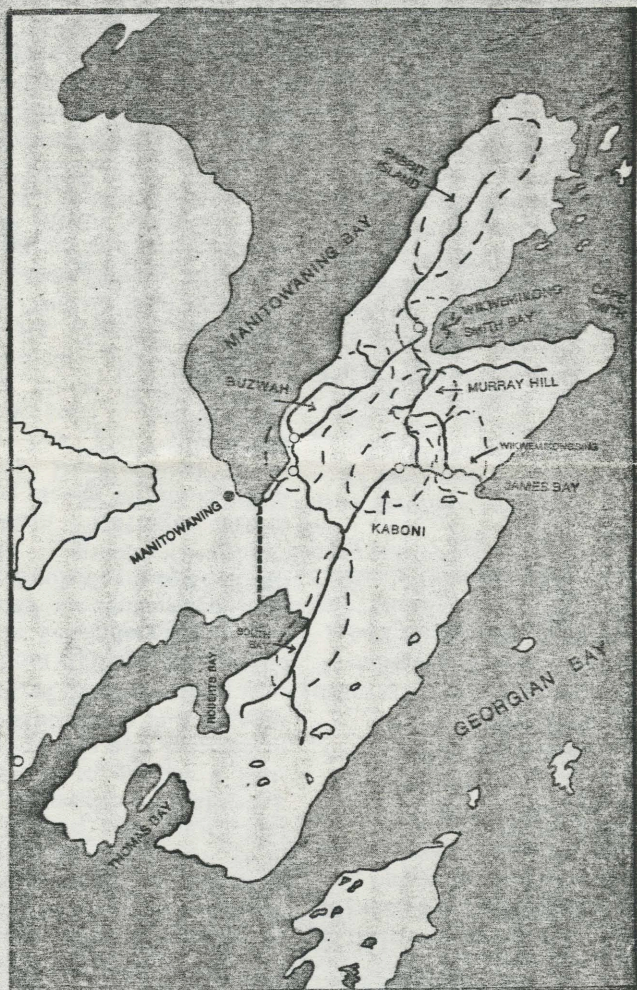
2nd RESIDENCE BUILT 1886-1888
(on the right)

HOLY CROSS MISSION

WIKWEMIKONG, MANITOULIN ISLAND, ONTARIO P0P 2J0

WELCOME TO THE WIKWEMIKONG

UNCEDED INDIAN RESERVE 20



WIKWEMIKONG is an officially recognized UN-CEDED Indian Reserve and means that Wikwemikong has not signed a Treaty with the Government of Canada.

It is home to the Indian Tribes of the Ottawa, Ojibway and Pottawatomi.

Village of Wikwemikong

WIKWEMIKONG is located 14 km (10 mi) from Highway 6 and is accessible by a paved road. The village was built on the western shore of Smith Bay. There are now 225 homes in the village and contain almost half of the reserve population.

Population

The resident population is approximately 2300 out of a total band membership of 3600. With the passing of Bill C31 on June 28, 1985, the number of re-instated Indians will increase those eligible for band membership.

Location

The Wikwemikong Unceded Indian Reserve is located on the eastern side of the Manitowin Island and is connected by an isthmus. It is bounded by the waters: Lake Huron, Georgian Bay, the North Channel and Manitowaning Bay.

Size and Geography

The size of the Reserve is 105,300 acres and extends north and south of approximately 40 km and 16 km wide (30 mi and 10 mi respectively). The topography of the Reserve is featured by high plateau areas with steep cliffs to the north and east which gradually dip to the southwest. The southern part of the Reserve is mostly composed of bedrock. This central area between the plateau areas is more fertile comprised of a large area suitable for growing crops. The northern area has noticeable rock conditions with shallow soils.

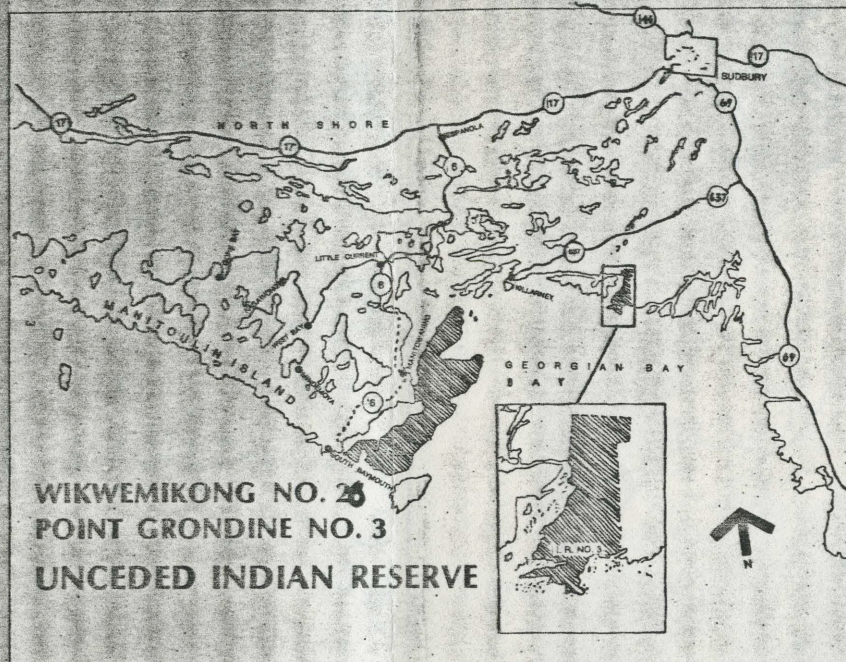
The shoreline is 169 km (105 mi) long and is mostly rocky. There are several beaches in the protected bays, the most frequently used one being King's Bay Beach.

Satellite Communities

The rest of the population dispersed among the six settlements outside the Village:

Rabbit Island	9.6%
6 km (4.5 mi)	
Kaboni	11.2
16 km (10 mi)	

South Bay	6.2%
26 km (16 mi)	
Buzwah	13.4
6 km (4.5 mi)	
Wikwemikongsing	6.2
14.5 km (9 mi)	
Murray Hill	6.5
4 km (2 mi)	



Point Grondine

The Point Grondine Reserve amalgamated with the Wikwemikong Unceded Indian Reserve in 1968. It is located 18 miles east of Wikwemikong, south of the La Cloche range near the French River area. This reserve is isolated and is accessible only by water. It is characterized by a rocky shoreline and is considered as a wilderness area and used mostly by trappers and hunters.

In 1971-72, the Wikwemikong Band surveyed the shoreline in order to lay out lots for leasing. There are now three leaseholds which bring in a small revenue for the Wikwemikong Band.

Acknowledgements:

The assistance of the Government of Ontario through the Ontario Ministry of Citizenship and Culture, the Honourable Lily Munro, Minister, is acknowledged.

Patricia McLeod
Darin Peltier
Ontario Youth Corps

Band Government:

The Wikwemikong Band Council consists of a Chief and 12 Councillors who are elected every two years according to the Indian Act. The Administration Offices are housed in the Wikwemikong Memorial Civic Complex which opened for business in March, 1985. Grand Opening was celebrated on July 26, 1985.

Another important organization is the Wikwemikong Development Commission, an incorporated body, which handles major projects for the Wikwemikong Band.

Located in the Complex
Police Office — 859-3141
Library — Opened in 1976
Native Child and Family Resource Centre — Opened in 1982

Services

Nursing Home
Built in 1971 — 30 beds
Extension 1980 — 30 beds
Community Health Centre
Built in 1971
Extension 1976-77
Amikook Building — Elders
Grand Opening — August 1, 1985
Rainbow Lodge — Rehab Centre
Post Office
Founded in 1890 and run by a lay brother from the mission Church.
Now has regular postal service and rural route delivery
Nadmadwin Clinic
Mental Health
Anishnabe Association for the Mentally Retarded
First to be located on an Indian Reserve. Founded 1986
Local Chapter, Canadian Diabetes Association Founded 1986

Water System

The Wikwemikong Village is serviced by a water and sewer system. Water is taken in from Smith Bay and is pumped to a reservoir located on a hill north of the village.

There is a trucked water delivery for the rural areas.

Wikwemikong Fire Station
Built in 1986 and was previously housed in Municipal Garage.

Kaboni Fire Station
Built in 1986.

Education

Indian and Northern Affairs Canada operates three elementary schools in Wikwemikong, including Special Education.

A Developmental Centre is also located in the Senior School for handicapped children.

A Nursery School opened in December 1971 with an enrolment of 16 youngsters and the first to be operated on an Indian Reserve in Canada under new legislation; the Day Nurseries Act allowing Indian Bands to operate a Nursery School. It is now licensed to enrol 64 students with a present enrolment of 57 students.

High School students (152) attend Manitoulin Secondary School and another 49 students attend off-island schools for a total of 201 students.

Wasse-Abin College offers upgrading classes for adults. Wikwemikong Development Commission has also sponsored training program in various fields, i.e., Log Home Building, Carpentry and Masonry. At present a Community Health Specialist Training Program is in progress.

Those pursuing higher education attend colleges and universities in the major cities.

Also Available:

Karate Instructor

Aerobics Classes Fitness Program

Recreation and Sports

A new Arena was built in 1975 with an artificial ice surface and a facility for dances, community feasts and wedding receptions.

Wikwemikong Minor Athletic Association is the major user of the Arena facility, offering an ice hockey program for boys from Tykes to Midgets, and Ringette for girls from ages 8 and up.

A Broomball League provides recreation and exercise for adults during the winter.

In the summer, the following activities are to be enjoyed: volleyball, blooperball, horse-pulling contests, 10 km Kaboni Road Race.

Of course, Bingo is enjoyed year-round.

Businesses:

Manitowabi Shell Service & Groceries

Peltier's Snack Bar

David's Confectionery

Joe's Confectionery

Peltier's Gift Store and Tent & Trailer Park

Murray's Texaco, Buzwah

Mandamin's Grocery, Kaboni

John's Confectionery, Rabbit Island

Steven's Confectionery, Murray Hill

Bus Service:

A&J Bus Lines

Lv Wikwemikong 8:00 a.m.
11:30 a.m.

Pow Wow

The Pow Wow was revived in 1960 by Rosemary Fisher and Josephine Manitowabi and in 1985 the Wikwemikong Band held its 25th Anniversary Celebrations. Originally, the Pow Wow was held in the Arena and featured many colourful dancers from the

Apache	Arizona
Navajo	New Mexico
Salish	British Columbia
Seminole	Florida
Woodland	Great Lakes

performing dances such as the Partridge dance, Rabbit dance, Eagle dance, Hoop dance, Grass dance, Snake dance, Katchina dance, Horse dance, and Sun dance.

The Pow Wow is still doing strong and is held at the ballpark, featuring a different style of Pow Wow dancing such as fancy dancing for men, Old Style for Men and Boys, Traditional, Shawl and Jingle for Women and Girls.

Many tourists attend the Pow Wow from such faraway places as Japan, France and Germany.

Future

Log Home Manufacturing Plant
Hotel Restaurant

Religion

The Indians of Wikwemikong adapted to the Catholic religion when it was introduced in the 17th century. The Jesuits exerted much influence in the development of the Reserve.

Four Catholic Churches are situated on the Reserve.

Historical Events

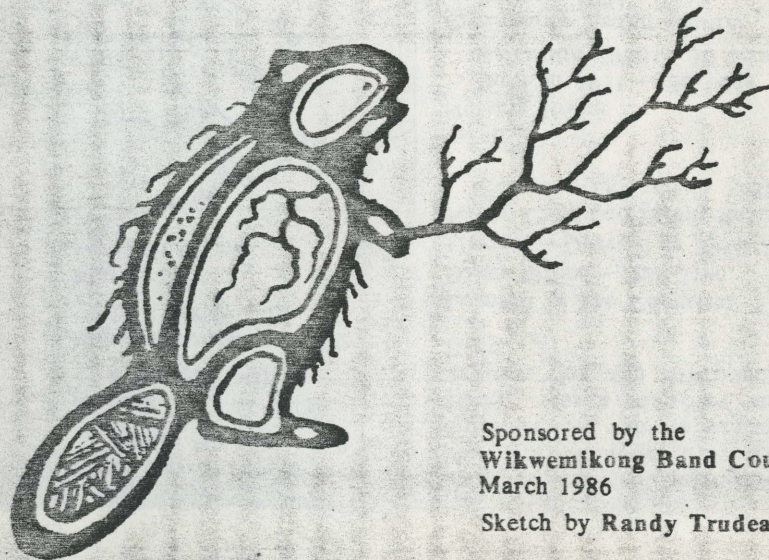
- 1648-49: Father Joseph Antoine Poncet, S.J., established the first mission.
- 1660- : Ottawa and Ojibway warriors defeat the Iroquois war parties.
- 1670- : Indians set fire to Manitoulin Island in order to cleanse it because they believed a bad spirit invaded the Island.
- 1776- : Manitoulin Indians fought for the King in the American Revolution.
- 1812- : Indian warriors from Manitoulin Island helped Brock's forces to defend Canada.
- 1825- : Father Jean Baptiste Proulx led a number of Pottawatomi and Odawa to Manitoulin in establishing a mission in Wikwemikong.
- 1836- : The Chiefs of the Wikwemikong Bands met Sir Francis Bond Head and signed the famous and disputed "Treaty" of 1836.
- 1836- : "Treaty" of 1836 — made up by Sir Francis Bond Head — the main objective of the treaty: "to initiate a migration of Indians of Upper Canada to Manitoulin Island, where they could live free from the influences of

white civilization." The Indians did not migrate to the Island as expected.

- 1847- : The first school was established on the Reserve.
- 1848- : Building plans for the church began.
- 1850- : August 13, the Governor-General of Upper Canada visited Wikwemikong.
- 1850- : Robinson-Huron Treaty was made with the Ojibway of Lakes Huron and Superior.
- 1852- : The church was dedicated with great ceremony.
- 1860- : Wikwemikong was the centre of the missions from Port Arthur to the West to Ottawa on the east and extending north to Albany River and south to Owen Sound
- 1862- : The Wikwemikong Chiefs did not agree to the terms of the Manitoulin Treaty, therefore, refused to sign.
- 1865- : July 1, the oil companies started to drill for oil on the Reserve.
- 1900- : Grand Council of Indians of Ontario met in Wikwemikong.
- 1930- : A soldier's monument was erected in the memory of the soldiers who lost their lives in World War I
- 1930- : Also replaced a cross erected in 1878.
- 1952- : Centennial Celebration of the Holy Cross Mission.
- 1968- : Manitoulin Island Unceded Indian Reserve is changed to Wikwemikong Unceded Indian Reserve.
- 1968- : South Bay Band and Point Grondine Band amalgamated with the Wikwemikong Unceded Indian Reserve.
- 1970's : The first subdivision was built on the western side of the central village.
- 1982- : August 6 — Band ceased operations due to financial difficulties.
- 1986- : Wikwemikong Band under good financial control.

Sources:

- * Wikwemikong Comprehensive Community Plan Background Information, October 1983, Wikwemikong Development Commission — Draft Copy.
- * Wikwemikong Unceded Indian Reserve Comprehensive Community Plan — Community Profile — December, 1983 — Wikwemikong Development Commission — Draft Copy 2.
- L.E.A.D. Submission — June 1984 — W.D.C.
- Father O'Flaherty — Church History.
- Radulovich, Mary Lou Fox, Manitoulin Island — Contemporary Native Art of Canada, R.O.M. 1978 Tellefson Lithographing Ltd.
- Souvenir Program of the Holy Cross Mission, Wikwemikong, 1852-1952.
- J. L. Richards & Assoc., Consulting Engineers and Planners — Engineering Study of Sewage and Water Systems for Wikwemikong Village — September 1979 — Ottawa, Ontario, Draft Copy.
- * Ecologistics Ltd., — Consultants Ltd. — Consultants of Wikwemikong Band in Economic Planning — Study commenced in 1981 and extended to 1986 — 5-year study.



Sponsored by the
Wikwemikong Band Council
March 1986

Sketch by Randy Trudeau

- MON.: 17: 8.00 a.m.: Wiki: for Catherine Peltier by Mr. and Mrs. Francis Wemigwans.
7.00 p.m.: Wiki: for Clement Cooper by Mr. and Mrs. William Trudeau.
- TUE.: 18: 8.00 a.m.; Wiki: for Leroy McLeod by the Martin Francis family.
3.30 p.m.: Nursing Home: for Sam Beaucage by The George Pitawanakwat family.
7.00 p.m.: Wiki: for Julius Pangowish by Uncle James and family.
- WED.: 19: 8.00 a.m.: Wiki: for Nora Papillon by Jean Clark.
3.30 p.m.: Nursing Home: for Gary Peltier by Victoria Pitawanakwat and family.
7.00 p.m.: Wiki: for Julia Kimeson by Leonard Kimewon.
- THU.: 20: 8.00 a.m.: Wiki: for Wildred Manitowabi by sister, Tina and family.
1.00 p.m.: Rehab.: for Thomas Lewis by his nephew, Robert.
7.00 p.m.: Wiki: for Marian Kitchikek by the David Aiabens family.
- FRI.: 21: 8.00 p.m.: Wiki: for Mary Ann Beaudry by Alize Shigwadja.
7.00 p.m.: Wiki: for Alex Trudeau by the Archie Trudeau family.
- SAT.: 22: 8.00 a.m.: Wiki: for Sam Manitowabi by his daughter, Tina and family.

THE THIRTIEST SUNDAY OF THE YEAR: OCTOBER 23, 1983. A.M.D.G.

- SAT.: 22: 7.00 p.m.: Wiki: for Reggie Enosse by James Simon.
7.00 p.m.: Manit.: for Nora Papillon by Peg Miller.
- SUN.: 23: 9.00 a.m.: Wiki: for the intentions of the people of the parishes.
11.00 a.m.: Wiki: for Georgina King by Mary E. Pitawanakwat and family.
10.00 a.m.: Kaboni: for Mary Lucy Fox by her family and friends.
12.00 noon: South Bay: for Marian Kitchikek by the Alfred Trudeau family.
4.00 p.m.: Buswah: for Thomas Lewis by Pamela and Tom.
- MON.: 24: 8.00 a.m.: Wiki: for Harriet Manitowabi by Joanne Ominika and family.
7.00 p.m.: Wiki: for Theresa Aiabens by the John Goulais family and Paul Bondy.
- TUE.: 25: 8.00 a.m.: Wiki: for Rosalie Osawamick by Barbara Farell and family.
3.30 p.m.: Nursing Home: for Catherine Peltier by Mr. and Mrs. Daniel Fox.
7.00 p.m.: Wiki: for Leroy McLeod by Janice and Stephanie Trudeau.
- WED.: 26: 8.00 a.m.: Wiki: for Julius Pangowish by Bernice and Seraphine.
3.30 p.m.: Nursing Home: for Georgina King by David, Wilma and Georgina Enosse.
7.00 p.m.: Wiki: for Julia Kimewon by Elaine Toulouse.
- THU.: 27: 8.00 a.m.: Wiki: for Marian Kitchikek by Alphonse Antoine.
1.00 p.m.: Rehab.: for Clement Cooper by the Basil Mandamin family.
3.00 p.m.: HOME MASS: GILBERT PELTIER'S: for Gary Peltier.
7.00 p.m.: Wiki: for Thomas Lewis by Henry and Dorothy Peltier.
- FRI.: 28: 8.00 a.m.: Wiki: for Rosa Moir by Ross Moir.
7.00 p.m.: Wiki: for Alex Trudeau by his brother, Joseph and Virginia.

SAT.: 29: 8.00 a.m.: Wiki: for Clarnece Neodigijig by the John Recollet family.
+++++
HOMEMAKERS RUMMAGE SALE: at Wasse-abin, Saturday, September 10, 1983 from 9.00 a.m. to 4.00 p.m.

MARRIAGE BANNS: Sept.18 & 25 & Oct.2: Harvey Bondy and Mildred Pitawanakwat and Fernand Wabie and Brenda Mejaki. Sept. 18th. John Wayne Simon and Beatrice King.

HOLY YEAR PRAYER: Blessed be the God and Father of Our Lord Jesus Christ who has filled you, Virgin Mary of Nazareth, with every spiritual blessing in Christ. Chosen to be Mother of Christ, you were fully redeemed in and through Jesus your Son. Because of Him, you were conceived and you came into the world free from all sin and remained ever in his friendshkp. Immaculate Conception, O Mary we call upon you. Hail Mary, full of grace, The Lord is with you. Blessed are you among women and blessed is the fruit of your womb, Jesus.

Together with the whole Church, we venerate the Redemption which was accomplished in you. Your singular participation in the life of Christ has given you a unique role in the redemption of the world and of manking. Help us celebrate worthily this new Jubilee of our Redemption. Give us a share in the Blessings you draw from the side of the crucified, risen Christ. You who are the first among the redeemed, enliven our participation in this Holy Year of Redemption.

Share with us the Saving power of Christ. Beseech Him to keep us from sin. Help us to find forgiveness and enable us to forgive each other. Bless our families and unite us in the victory of love. Grant peace to our country and to all the nations of the world. Holy Mary, Mother of God, pray for us sinners now and at the hour of death. All this we ask of you, O clement, O loving, O sweet Virgin Mary. AMEN.

or plant but a real human. The unborn child in the mother's womb is completely helpless.

THE RIGHT TO LIFE

The Sudbury and the Ontario RIGHT TO LIFE asks the cooperation of all right thinking and decent minded people to stand up for the right to life of the unborn children of this country-----BY ACTION.....

WHAT CAN YOU DO? ++++++ WHAT SHOULD YOU DO?

The unborn have a right to life. The unborn is not a vegetable, mineral

- 1. PRAY DAILY FOR THE UNBORN
A PRAYER++++
Father, Source of all life,
we praise You and we bless You for the
precious gift of life.
In the presence of the calamity of
abortion which threatens thousands of
unborn babies, we implore You, loving Father,
to give us great respect for every pregnant
mother; inspire us with the words and the
actions which give courage and confidence.
Enlighten the expectant mothers
who are deliberating the fate of their child;
in Thy mercy, show them the beauty of mother-
hood and the dignity of all human life.
May the doctors use their expertise
to help the mothers in doubt and in difficul-
ties, in order that they may bring to normal
term the life they now carry in suffering.
Give to these mother s, to these doctors,
and to all of us, the strength to accomplish
Your will, through Jesus Christ, our Saviour,
our Creator and our God to Whom all life is
precious. Amen. May it be so.

- 2. RALLY
- ATTEND IF POSSIBLE
PRO - LIFE RALLY
Toronto
Sat.- October 1, 1983
2.00-4.00 p.m.
Queen's Park

- *****
- 3. WRITE
- LETTERS ABOUT RESPECT FOR LIFE
TO
- a)- The Hon. William Davis
The Premier of Ontario
Parliament Buildings
Queen's Park
Toronto, Ontario M7A 1A1
- b)- The Hon. Roy McMurty
Attorney General Department
18 King Street East
Toronto, Ontario M5C 1G4
- c)- See notices in the church
about addresses and names of
others to whom you can write.

To abort a child means that the child is prevented from being born by being killed.

Abortion is a crime against defenceless, unborn children-it is murder.