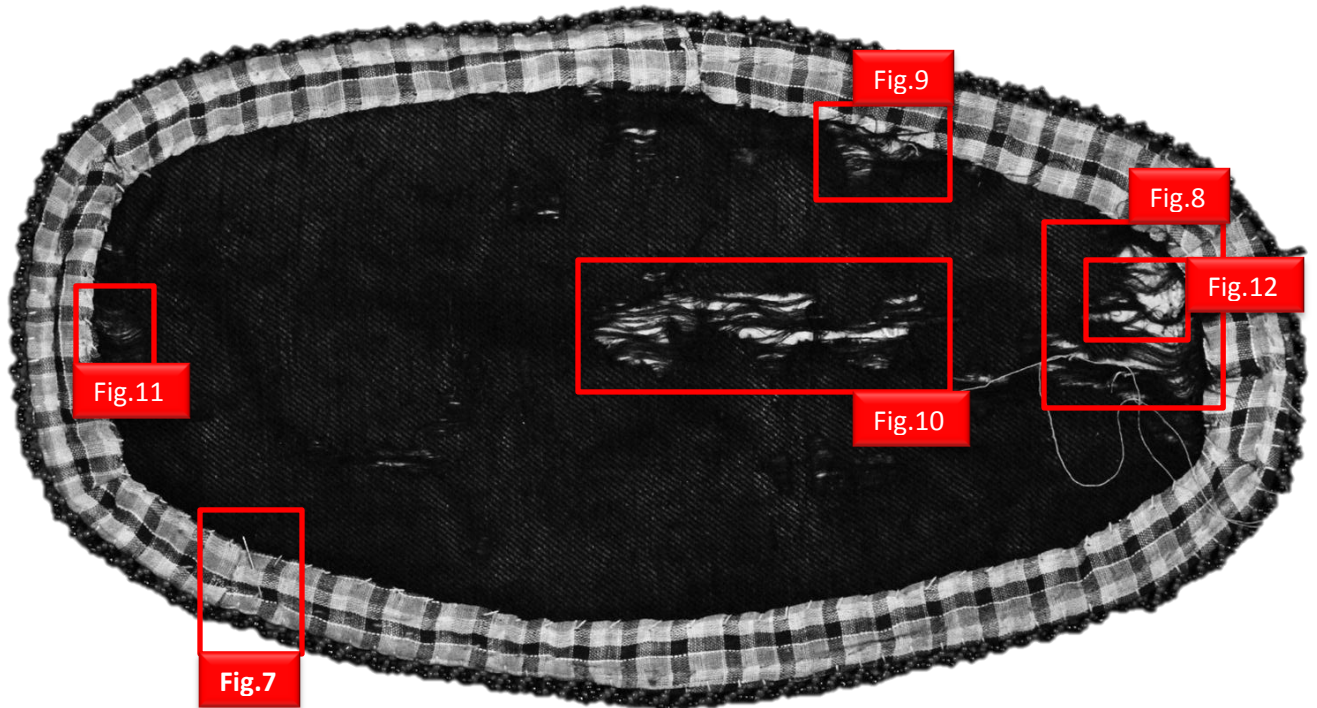
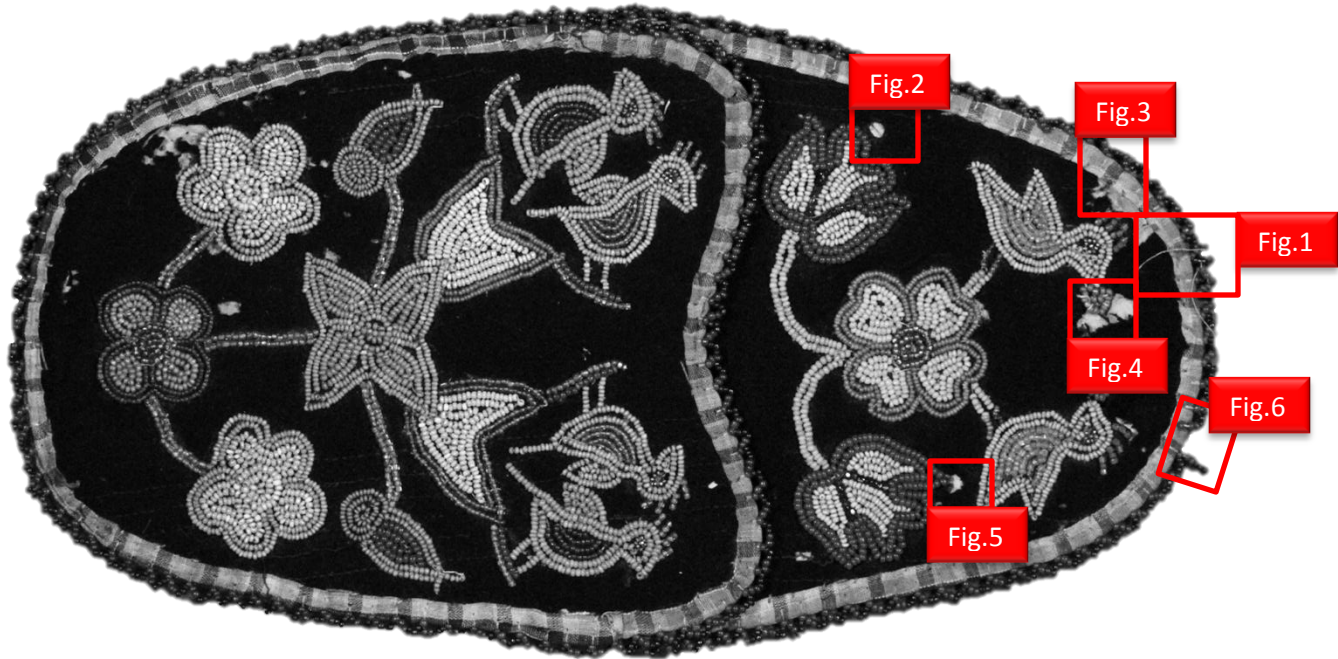


Conservation Report

Gray Scale / Photographs / Damage Evidence

GRAY SCALE



PHOTOGRAPHS



Object Name: *Beaded Pouch*
Conservation Tech: *M. McMillan*
Date: *02/28/2011*
Item #: *2011-4_007_001*

Front



Object Name: *Beaded Pouch*
Conservation Tech: *M. McMillan*
Date: *02/28/2011*
Item #: *2011-4_007_001*

Back

DAMAGE EVIDENCE



Fig. 1 – Loose Strings – Top front edge



Fig. 2 – Material Loss – Top front left edge



Fig. 3 – Material Loss – Top front left edge



Fig. 4 – Material Loss – Top front center



Fig. 5 – Material Loss – Top front right side



Fig. 6 – Loose Beads – Top front edge



Fig. 7 – Pin – Lower bottom side

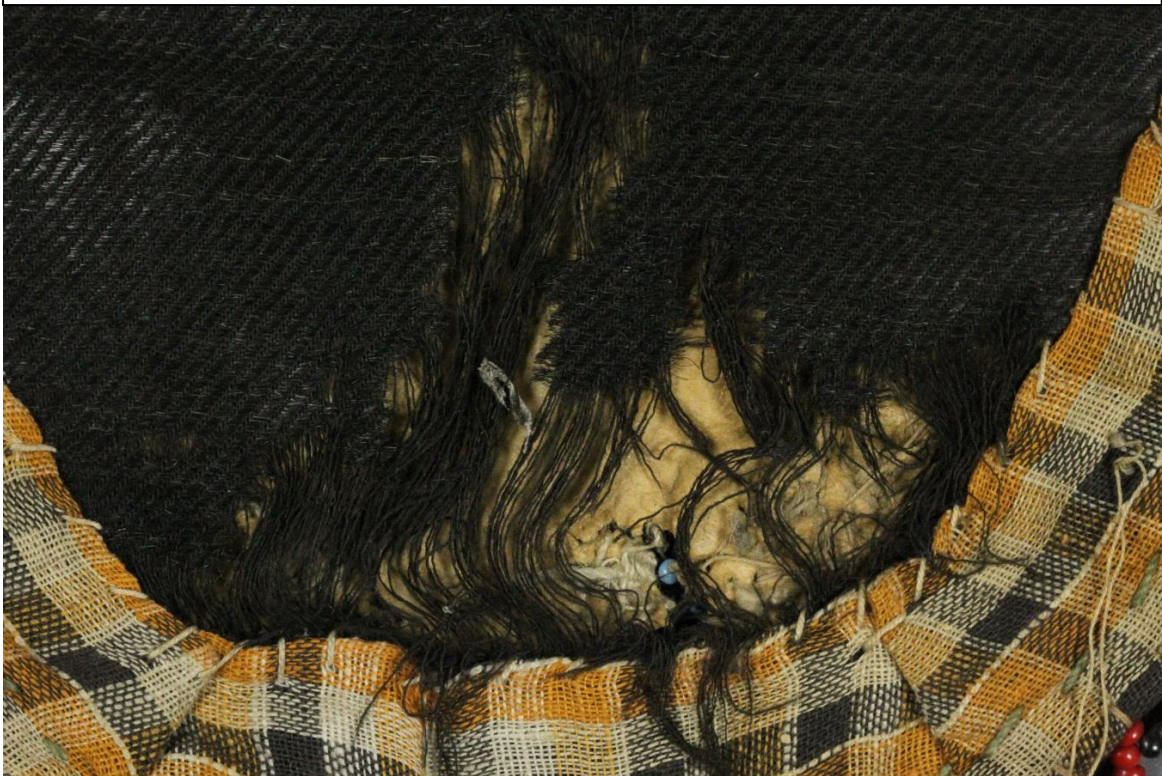


Fig. 8 – Unthreaded material – Top back left side



Fig. 9 – Unthreaded material – Back upper left side



Fig. 10 – Unthreaded material – Back center



Fig. 11 – Unthreaded material – Lower back center



Fig. 12 – Paper – Top back left side