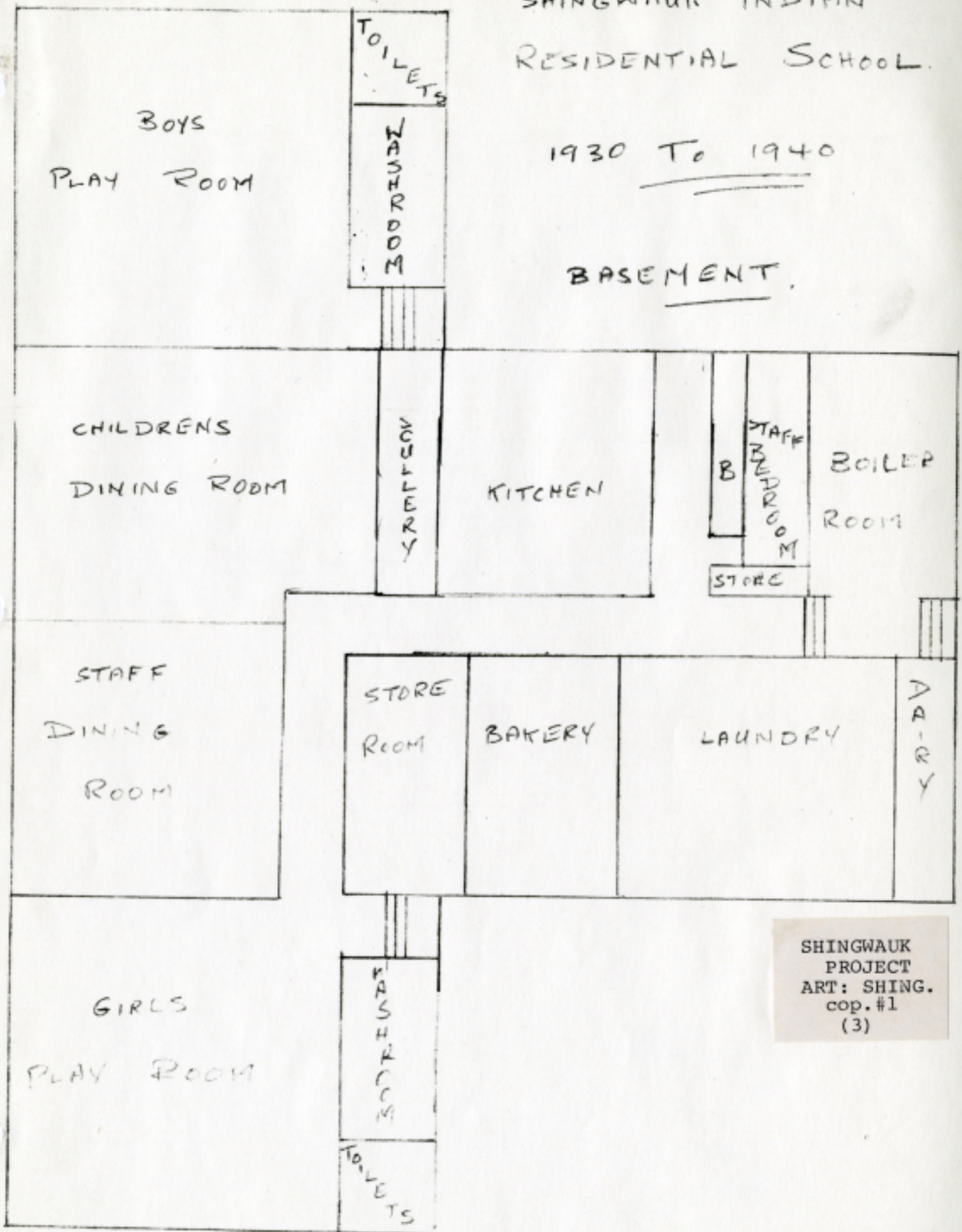


SHINGWAUK INDIAN
RESIDENTIAL SCHOOL.

1930 To 1940

BASEMENT.



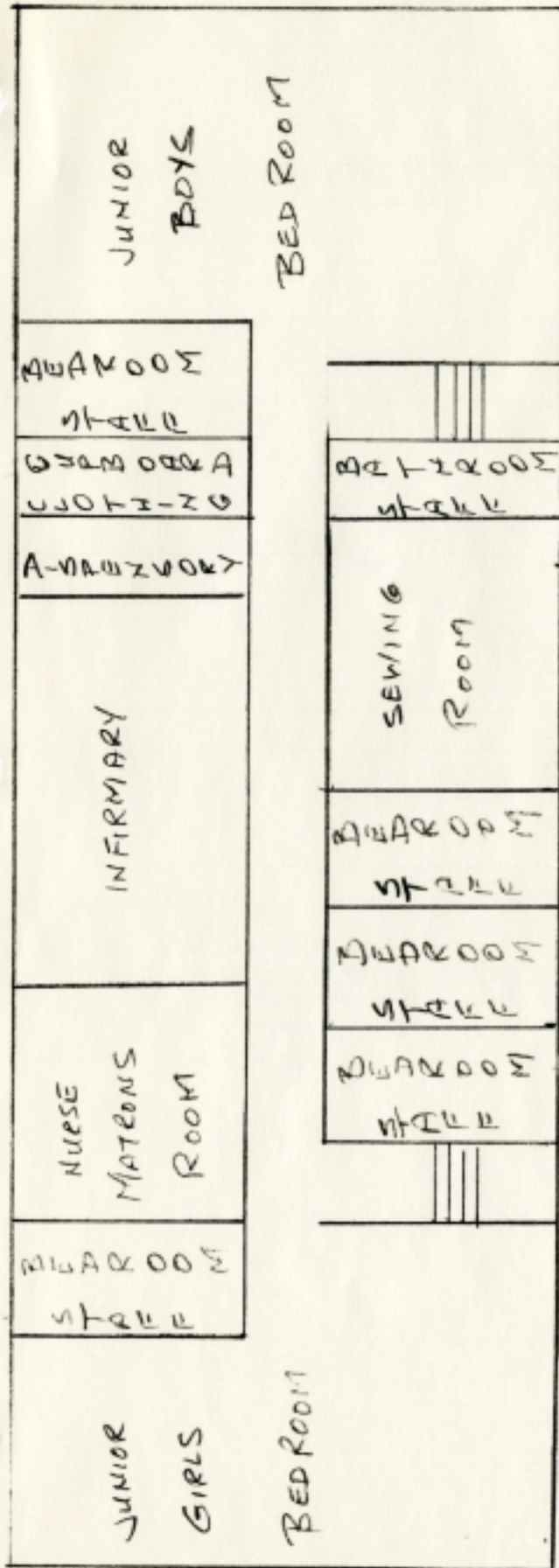
SHINGWAUK
PROJECT
ART: SHING.
cop. #1
(3)

DRAWN BY FRED WIBLE

SHINGWIAUK INDIAN
RESIDENTIAL SCHOOL

1930 TO 1940

2ND FLOOR

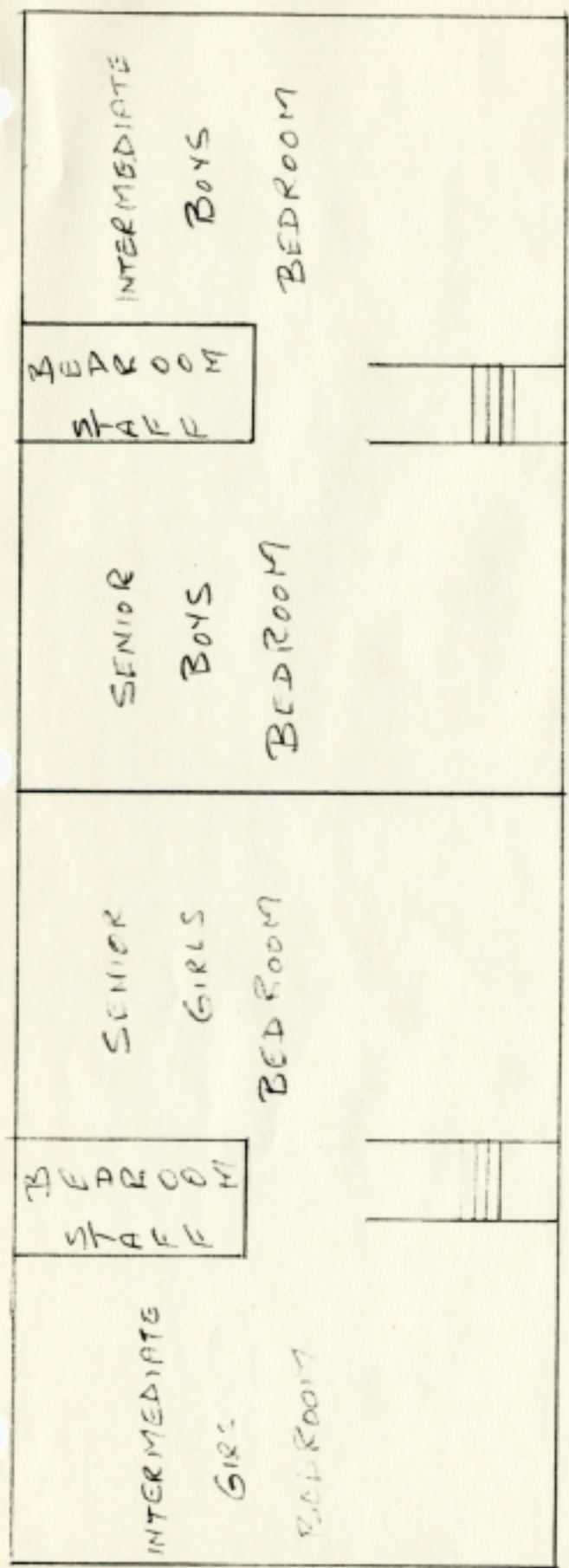


DRAWN BY FRED INGLE

SHINGWALK INDIAN
RESIDENTIAL SCHOOL

1930 TO 1940

3RD FLOOR



DRAWN BY SPED INGLE.