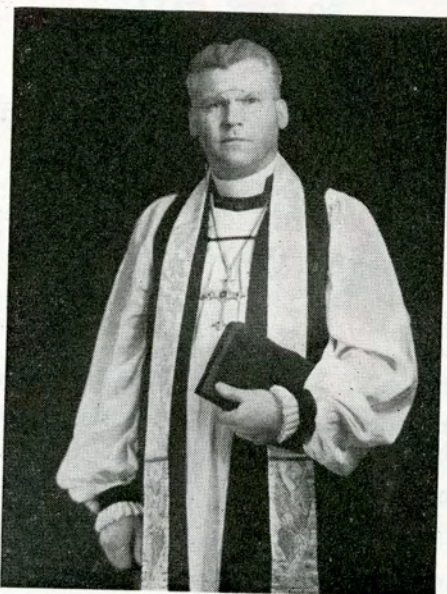




The
Algoma Missionary News



Special Issue

1942

The Church's Response in 1941

TO THE CALL

"Take the Load Off England!"

The Church of England in Canada set out to raise \$330,000 for Missions, Religious Education, Social Service and to replace grants formerly received from England. We all rejoice that the amount received was \$338,723.

Algoma Diocese was asked to contribute \$3,666 of this amount and the response was most gratifying. The amount raised was \$4,482 — that is 122% of the apportionment.

Let us pray that 1942 may bring equally good results.

The Call of Algoma

URGENT NEEDS FOR 1942

My dear People:

In order to enable me to meet pressing needs for the year 1942, I appeal to the Diocese of Algoma and its many friends for the following amounts, which are required over and above the funds now available. I realize that many calls for generous giving are made in war time upon us all and the war effort requires our whole-hearted co-operation. But we will all agree that it is important also to see to it that the worship and work of the Church should be maintained.

I. To provide a living stipend for clergy serving in missions in Algoma:

20 gifts of \$100.00, 100 gifts of \$10.00, 100 gifts of \$5.00, to restore cuts made some years ago in stipends of the clergy, and to offset the loss caused to the Mission Fund by decreased interest rates.

20 gifts of \$25.00 and 20 gifts of \$5.00 for the Bishop's Discretionary Fund (for sickness in homes of clergy, etc.)

II. To promote necessary missionary projects in Algoma:

500 gifts of \$2.00 and 500 gifts of \$1.00 to pay expenses of Sunday School Van, and to pay student missionaries in summer missions.

10 gifts of \$100.00, 100 gifts of \$10.00, and 50 gifts of \$5.00 to extend missionary work in the Diocese.

III. For education and inspiration:

500 gifts of \$1.00 to supplement revenue from Divinity Students' Fund.

30 gifts of \$10.00, and 60 gifts of \$5.00 to help pay expenses of the Algoma Summer Conference for Young People, to be held at Whitefish Falls in 1942, and Clergy Schools.

If you will be good enough to make your contributions on Sunday, March 1st, in the special envelopes provided, I shall be most grateful.

Yours faithfully,

George Frederick Algoma.

Bishophurst,
Sault Ste. Marie,
Ontario.

Why Does the Diocese of Algoma Need Funds --

AND WHY IS THE NEED URGENT ?

1. In order to carry on and extend the work of the Church in Algoma the amounts now being received are entirely inadequate to meet the present day challenge for the spiritual needs of hundreds of families in sparsely settled parts of the Diocese. It is estimated the cost for missionary needs during 1942 will be \$32,000, which is made up of:

Stipends for 37 missionary Clergy	\$ 26,500
Offsetting drop in revenue due to fall- ing interest rates	500
Divinity Students' Fund, Student Mission- aries, Van Work, Youth and Clergy Con- ferences	2,500
Extension Work	2,500
	32,000

This sum is over and above amounts raised as local quota by each mission for the partial payment of stipend of their missionary.

Diocesan Revenues for missionary purposes in Algoma are derived from the following sources:

- (a) The Algoma Mission Fund Apportionment. — That is the amount contributed by the people in the parishes and missions for missionary work in Algoma. The total contribution in 1941 was \$3,885.
- (b) The Woman's Auxiliary of the Diocese of Algoma make a block grant each year towards missionary work in the Diocese. The grant for some years has been \$1,500, but in 1941 this was raised to \$2,000,—a very generous gesture on the part of the W. A.
- (c) The interest on the Bishop Sullivan Memorial Sustentation Fund amounted in 1941 to \$7,778. This is \$1,016 lower than the revenue derived in 1930.
- (d) The Missionary Society of the Canadian Church, (M.S.C.C.) contributed to Algoma in 1941 \$10,905. This amount was made up as follows:

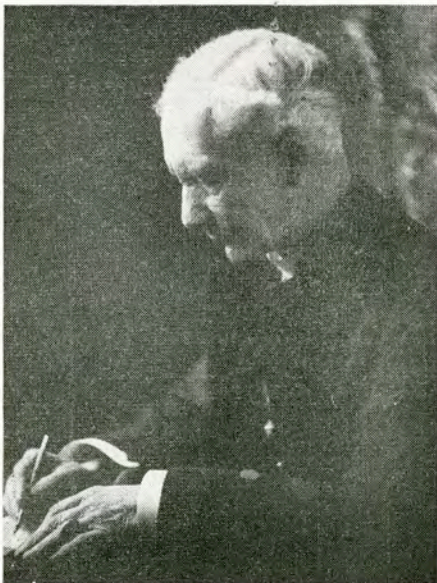
To replace the grant from the S.P.G. (England) ...	\$ 2,315
(England)	3,000
Grant from M.S.C.C. (The Church of England in Canada)	5,590
Total	\$ 10,905

The M.S.C.C. grant for 1942 will be approximately ..\$ 12,000

If all these amounts (a, b, c and d) are added up, the total is \$25,663. Subtracting this from the total budget for 1942, \$32,000, we have a balance of \$6,337 to raise.

(2) The second reason we are making an appeal now is to provide a financial basis for extension work in the Diocese. There are many places in Northern Ontario in which the Church of England should be making its unique contribution to individual and social life and in order to **begin** and **continue** this work we must build up an adequate Church extension fund.

(3) Another reason we are appealing for current revenue now is to provide a sufficient balance to carry us along until the capital funds which we hope to raise through gifts and bequests begin to bear sufficient revenue to take care of our missionary work. We are applying to the Provincial Council of Ontario for permission to reopen the Archbishop Thorneloe Memorial Fund in April, 1942. If this request is granted we will feel free to appeal to the whole Church population of Ontario for assistance in building up our Funds.



THE LATE
MOST REVD GEORGE THORNELOE, D.D., D.C.L.,
Sometime Archbishop of Algoma and
Metropolitan of Ontario

Legacies will be placed to the credit of the Archbishop Thorneloe Memorial Fund.

Immediate gifts to capital are needed to ensure the continuance of God's great work. These will be invested in Dominion War Bonds.

War Savings Certificates made payable to the Diocese of Algoma will help the war effort as well as the Diocese. The Bishop has already received several anonymous gifts of Certificates for this fund.

What Is the Money For

AND HOW WILL IT BE SPENT ?

1. To improve the stipends of the Missionary Clergy.

Since 1932 the stipends of the Clergy serving in missions have been cut as much as 10%. Cuts which proved necessary in most branches of industry during the depression have long since been restored, and it is obviously right to do our best at this late date to bring the stipends of the missionary clergy to the former levels. The highest amount received by any one of these clergy after long years of faithful service, for the support of himself and his family, and in most cases for the running of a car, has been at the rate of \$26.00 a week. Others who have served less than ten years have received at the rate of \$21.00 a week, and some as low as \$18.00 a week.

We believe that the Laity are anxious to have the Clergy, who serve Christ and His Church, paid reasonably well, and we believe that when they know the facts they will gladly help to improve the situation.

Through certain generous contributions we were able to provide a bonus at the end of the year, making up stipends in full for 1941, and we trust that our people may help us to continue to pay the clergy in full in 1942 and the following years.

2. The Bishop Sullivan Memorial Sustentation Fund, built up in Archbishop Thorneloe's time, has been bringing in between \$7,000 and \$8,000 per annum for many years, and it has been the very backbone of the financial support of our missionary work. The capital of this Fund is sacred as it is money given by those who have long since passed to their reward. They gave it because they believed in the Church and because they wanted to honour the memory of Bishop Sullivan and to help great men like Archbishop Thorneloe and Archdeacon Gillmor in their consecrated efforts to blaze trails in a new land for Christ and His Church. That sacred trust is committed to us and we in this generation are asked to do our part in building up the capital of this fund, and in keeping up the revenue from the existing fund. Interest rates have been falling and one of our competent business men has worked out accurately the losses in revenue due to this cause which we must face during the next five years. The figures are alarming, and we are asking our faithful Church people to make up for the loss due to falling interest rates.

(3) The Bishop's Discretionary Fund is the only Fund available in the Diocese out of which unusual situations or emergencies can be met. For example, serious illness may develop in a parsonage, involving heavy expenses for hospitalization, medicines and doctor's fees. Some help must be provided, and here the Dominion W. A. have been most generous. But the Diocese should help in such

cases, and this means a call upon the Bishop's Discretionary Fund. Not long ago one of our faithful missionary clergy passed away very suddenly, and funeral expenses had to be arranged by the Bishop along with the generous parishioners. The Bishop's Discretionary Fund was the only diocesan source from which money could be provided for this purpose. When the clergy are asked to move from one mission to another moving expenses must be paid in part, and the required amount is given from the Bishop's Discretionary Fund. Many emergencies arise in the administration of a Diocese as large as Algoma, some of them small and some requiring a considerable outlay. During 1941 the Bishop was called upon to pay out \$902 for emergencies.

(4) **The Church of England Van Work in Canada** has been most effective for many years. Miss Hasell and Miss Sayle who have been pioneers in this great work have graciously consented to operate a Van in Algoma Diocese in 1942. Financial aid for their work has come largely from England but no right-thinking Canadian expects England to support our Church work in Canada today. We are asked to provide \$300 for the operation of the Algoma Van. Sunday School by Post Work is being assisted this year by generous grants from the Dominion W. A. and the G.B.R.E., and hence we do not need to ask for donations at present for this work. Readers may be interested to know that we have now nearly one thousand pupils doing Sunday School by Post work in Algoma Diocese.

(5) **Student Missionaries in Summer Missions.** There are a number of points in Algoma where it is necessary to minister to people who are so isolated in winter that it is impossible to reach them regularly, or who are temporary visitors in the Diocese for a few months only. This is true of places like Temagami Lake, sections of the Lake of Bays, parts of the Muskoka Lakes, some areas in the Parry Sound district, in Temiskaming and in Thunder Bay. For this purpose we secure from the Theological Colleges men who have nearly completed the Divinity courses and who are well recommended by the Heads of the Colleges. Many young men who have been introduced to Algoma in this way have decided to spend their Ministry in this romantic country. The payment to the student missionaries is small, only \$60.00 per month for three months. In addition to what is raised locally in missions which they serve, it costs the Diocese at least \$800.00 per annum to pay all the students who are employed. In dioceses like Algoma such work is most important, and it should be extended rather than curtailed, if we are to minister to the people in our midst.

(6) **Extension Work.** The previous section has pointed out the need for students to help out in the summer in certain isolated parts of the Diocese. In some of these sections we ought to have clergymen living permanently in their midst, ministering to isolated families in their loneliness, and helping them to develop healthy mindedness, moral stability and strength of soul in the worship

and work of the Church. It is often in isolated places that subversive propaganda flourishes and as a contribution to national well-being, as well as for the sake of the souls concerned, it is most important to have the Church working at its best among these people.

All honour is due to the clergy who so willingly serve vast areas and do their best to reach all the people. But in spite of their splendid devotion, the Church of England is not making and cannot make the contribution it should be making in Northern Ontario, unless we have several more regular full time clergy working in the six Deaneries of Algoma Diocese. Regular Church work should be carried on in the mining communities east and west of Kirkland Lake, in Elk Lake and Matachewan, in the suburbs of Sudbury, along the main line of the C. P. Ry near Biscotasing, at Hawk Junction, Wawa and the Helen Mine, in the areas outside of Fort William not including Murillo, at Mindemoya and the surrounding country on Manitoulin Island, and at Orrville and the surrounding areas in the Parry Sound District.

The old Church has proved to the hilt her worth in nation building in England, and Canada can only be the kind of Dominion we dream of in the years to come, if the same old Church is ringing out throughout the whole country her call to worship, feeding the people by means of the Sacraments, instructing them in the Word of God, and sending them forth as Christian citizens to serve their fellow men. We need the salaries of seven or eight more clergy guaranteed before we can tackle this extension work in its totality. In 1942 we are asking that at least one step forward be taken by adding one of the seven required clergy to our staff.

7. Divinity Students' Fund.

One of the most important concerns in any Diocese is to have a succession of fit persons to serve God in the Ministry of the Church. Fathers and mothers in Algoma have been asked by the Bishop to talk over the subject of vocation to the ministry with their boys, so that their minds and souls may be ready to respond to the call of God, if it should be that He is calling any of them to the ministry. Candidates for the ministry must be well trained intellectually and spiritually if they are to interpret the Christian religion effectively to men and women of this generation. Hence a thorough university and theological college education is imperative. The cost of higher education is great and it becomes necessary to provide financial assistance for most Divinity students. We have a small fund from which we are helping students in college who are planning to be ordained in Algoma, but this fund will soon be used up if it is not replenished. The usual amount of a student's bursary is \$150 and a few such bursaries should be provided each year to supplement the existing fund.

8. Youth Conference.

A Summer Youth Conference in 1942 is in process of organization. It will be held in the Church School at Whitefish Falls, which is an ideal location for such a gathering of young people. The purpose of such a Conference is to have the youth of today come together and receive instruction under competent leaders, to have them discuss problems of religion and life under wise guidance, and in the midst of a healthy spiritual atmosphere to learn more concerning the worship and the work of the Church.

We are anxious to have a carefully selected group come together from various parts of the Diocese and it will be necessary to help with the expenses of the delegates. We hope that many Sunday Schools, A.Y.P.A.'s, W.A.'s, Men's Councils and other organizations will provide \$10 scholarships to help pay expenses of those who attend. We will require at least thirty \$10 scholarships.

9. The Clergy School.

The Synod of the Diocese of Algoma meets every three years. In the intervening years it is well to have the Clergy of the Diocese assemble for fellowship, as well as for worship and study together. This seems to be particularly important in Algoma where the clergy are so widely separated from each other and where the more isolated men particularly feel the need of consultation and fellowship with their brethren. In many Dioceses "refresher courses" are a regular part of the Church life, so that the clergy may be stimulated intellectually and spiritually, and refreshed physically by a change of environment for a few days. In 1942 it has been proposed that we hold two Clergy Schools, one in the Archdeaconry of Algoma and the other in the Archdeaconry of Muskoka, so as to have the Schools within reach of all the clergy and to keep the travelling expenses as low as possible. It may be, however, that one School will be organized for the whole Diocese. In either case there will be a considerable financial outlay for travelling and accommodation and we realize that it is impossible to ask the clergy to bear the whole expense themselves. We feel sure that many of our Church people will quite willingly assist in making a Clergy School possible, for the sake of the clergy themselves as well as for the subsequent welfare of the Diocese.

The Algoma Missionary News

THE ALGOMA MISSIONARY NEWS is the official organ of the Diocese of Algoma. It is published for the Diocese by the Cliffe Printing Co., Limited, 122 Spring Street, Sault Ste. Marie, Ontario.

THE ALGOMA MISSIONARY NEWS is published bi-monthly. The price for single copies is 10c. The subscription price is 50 cents per annum.

All subscriptions, items of news and other communications should be sent to the Editor.

REV. CANON COLLOTON,
16 Forest Avenue,
Sault Ste. Marie, Ont.

GIVING

Giving is spiritual and sacramental. It is as truly a part of the worship of God as prayer or praise. The last public act of Jesus before the betrayal was to sit over against the treasury and watch the multitude cast in their offerings. Worship that comes empty-handed soon ceases to come at all. Giving not only blesses the giver and the receiver, but, as pointed out by St. Paul, it brings glory to God in worship.

For Generous Giving

O GOD, who alone art the source of all our strength: Assist with Thy grace our efforts to maintain Thy Church in this Diocese. Guide us by Thy wisdom, support us by Thy power, pour out upon us the spirit of fellowship and of generous giving; and grant us such continued zeal and success that everywhere Thy people may receive the ministrations of Thy Word and Sacraments; through Jesus Christ our Lord. Amen.

BLESSED Saviour, who didst say to Thy disciples, Lay up for yourselves treasure in heaven; So teach Thy people that, while they set in order their earthly affairs, they may not forget heavenly things, but remember the needs of the poor and of Thy Holy Church; who with the Father and the Holy Spirit livest and reignest, one God world without end. Amen.

OUR REGULAR GIVING

TOWARDS LOCAL CHURCH EXPENSES, APPORTIONMENTS AND ASSESSMENTS

The regular support of the Church naturally falls into two parts, support of the Church in the Parish and support of the Church outside the Parish. The Church of England is not a congregational Church. She is a Catholic Church and as such is interested in the welfare of her members wherever they are to be found. It was this spirit which made the people of the Old Country send their money into Canada in large amounts for many years. We have freely received and therefore we must freely give in thanksgiving to God for His many mercies to us and the generous spirit of those who were moved by Him to help us.

We pass over the expenditure of the Parish. **Payments outside the parish fall into two classes, those called "Assessments" and those named "Apportionments."**

ASSESSMENTS

Assessments **must** be paid if a parish or mission is to be represented at the Synod of the Diocese and if it is to be in good standing so far as the Pension Fund is concerned. Assessments are as follows:

1 Diocesan Expense Fund.

Every important organization must be administered on business lines, and a Diocese is no exception to the rule. For its proper administration there must be a Synod Office where the Bishop and Secretary-Treasurer can attend to the large amount of work which falls to their lot. Algoma's Synod Office is run in the most economical way possible, but considerable expense cannot be avoided, and the Diocesan Expense Fund is created to take care of this and other necessary charges. From this fund are paid part of the salary of the Secretary-Treasurer, a stenographer, general office expenses, taxes on the See House, and other necessary items. The fund is raised partly by a tax on the income of invested funds, and the remainder by an assessment on the parishes and missions of the Diocese, based on their annual returns of parish expenditure.

2. Pension Fund.

The problem of providing pensions for the clergy of missionary dioceses, and for their widows and orphans, has long been a pressing one for the Canadian Church, and a few years ago the General Synod placed the matter on a business-like basis. The majority of the clergy are unable out of their small stipends, to provide adequately for the future, consequently the pensions are considered as "deferred stipend". To make this fund financially sound an annual assessment of 7½% of the salaries of the clergy must be paid into it. Of this the clergyman pays 2½% personally, and the salary paying source (parish or diocese) pays the remaining 5%.

APPORTIONMENTS

The amount required for apportionments is distributed over the Diocese to each Parish and Mission. Formerly the amounts were apportioned by a Committee, but last year Deaneries were consulted and they agreed to raise a sum which they felt within their reach. In some cases there was a reduction in the amounts apportioned. By this means we believe that a sincere effort will be made to meet these payments which are the minimum required to carry on the work efficiently. Apportionments are as follows:

1. Algoma Mission Fund.

There are many missions in Algoma, about forty-five in all, whose people are unable to pay the full stipend of their clergy. In these cases the Diocese must assist. From the Algoma Mission Fund grants are made to the minimum set by the Synod. The stipends are not large when paid in full, but during the depression years they were reduced by as much as 10%. Under present conditions it is felt that every effort should be made to restore such stipends to the full amount. The parishes and missions of the Diocese are asked to raise \$3565.00 for the A. M. F.

2. M. S. C. C.

The Missionary Society of the Church of England in Canada (usually referred to as the M.S.C.C.) consists of the whole body of the Church of England in the Dominion organized for Church extension within Canada and in certain overseas fields.

The money required for this work is raised by the Church people of the twenty-seven Canadian dioceses, and by far the greater part of it comes back to the Church in the Dominion in grants to the sixteen Missionary Dioceses, of which Algoma is one.

The M. S. C. C. has now undertaken to make up the large amount heretofore contributed by the Church people of England for the support of missionary work in Canada, but which they can no longer send to us on account of the war. The Canadian Church is therefore pledged to self-support. The grant of the M.S.C.C. to the Algoma Mission Fund for 1941 was \$10,905.00 In 1942 the M. S. C. C. has promised \$12,000.00. This year Algoma is asked to raise \$3,216.00.

3. G.B.R.E. (General Board of Religious Education.)

This Board is in charge of the work of Education among our boys, girls and youth (A.Y.P.A.) It prepares lesson courses for the use of Sunday Schools and courses of instruction for teachers. In connection with this there is a Supply Department where books, papers, etc., are sold for the use of Schools and Bible Classes. This is a very worthy cause. For the G. B. R. E. this Diocese is asked for \$250.00

4. C. S. S. (Council for Social Service.)

This Council provides information and advice upon the social problems of the Church. It is the Church's duty to consider the well-being of our people and to be able to take an active part in any movement which tends to the betterment of society. The Council keeps the Clergy and laity in touch with such questions and many other kindred subjects. Algoma's share of the cost of this work is \$200.00.